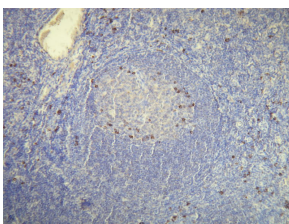


## Anti-Human Kappa Light Chain Antibody [H16-E] (A8192)

### Specifications:

Name:	Anti-Human Kappa Light Chain Antibody [H16-E]
Description:	Rabbit monoclonal (H16-E) antibody to Human Kappa Light Chain.
Specificity:	This antibody recognizes the epitope between Gly92 - Gly104.
Applications:	IHC-P, IHC-Fr
Recommended Dilutions:	IHC: 1:100-1:500.
Reactivity:	Human
Immunogen:	Peptide derived from C-terminal sequence of human kappa light chain IgG.
Host:	Rabbit
Clonality:	Monoclonal
Clone ID:	H16-E
Isotype:	IgG
Conjugate:	Unconjugated
Product Form:	Liquid
Formulation:	Supplied in Tris Buffered Saline, pH 8.0, with 20 mg/ml BSA and 0.05% Sodium Azide.
Storage:	Store at 4°C.
Disclaimer:	This product is for research use only. It is not intended for diagnostic or therapeutic use.

### Images:



Expression of the Kappa Light Chain immunoglobulin in the plasma cells of the palatine tonsil. Formalin fixed, paraffin embedded human tissue (4 $\mu$ m section) stained with Anti-Human Kappa light chain Antibody (A8192).