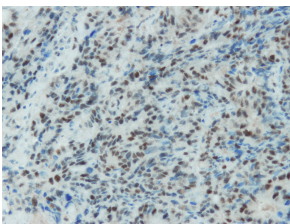


Anti-MSH2 Antibody [N29-D] (A8230)

Specifications:

Name:	Anti-MSH2 Antibody [N29-D]
Description:	Rabbit monoclonal (N29-D) antibody to MSH2.
Specificity:	This antibody recognizes the epitope between Ala107 - Ser129.
Applications:	IHC-P, IHC-Fr
Recommended Dilutions:	IHC: 1:100-1:300.
Reactivity:	Human
Immunogen:	Peptide derived from the domain close to the N-terminus of human MSH2.
Host:	Rabbit
Clonality:	Monoclonal
Clone ID:	N29-D
Isotype:	IgG
Conjugate:	Unconjugated
Product Form:	Liquid
Formulation:	Supplied in Tris Buffered Saline, pH 8.0, with 20 mg/ml BSA and 0.05% Sodium Azide.
Storage:	Store at 4°C.
Disclaimer:	This product is for research use only. It is not intended for diagnostic or therapeutic use.

Images:



Retained MSH2 expression in the colorectal adenocarcinoma. Formalin fixed, paraffin embedded human tissue (4µm section) stained with Anti-MSH2 Antibody (A8230).