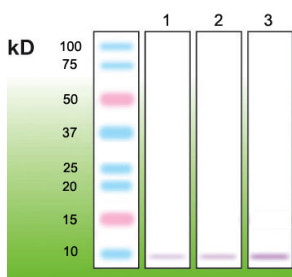


Anti-Metallothionein Antibody [N11-G] (A8262)

Specifications:

Name:	Anti-Metallothionein Antibody [N11-G]
Description:	Rabbit monoclonal (N11-G) antibody to Metallothionein.
Applications:	WB, ELISA, IP, ICC
Recommended Dilutions:	WB: 1:1,000, ELISA: 1:5,000-1:10,000.
Reactivity:	Human (Isoforms: 1A, 1B, 1E, 1F, 1G, 1H, 1I, 1L, 1M, 1Q, 1S, 1Y, 2A), Rabbit (Isoforms: 1A, 2A)
Immunogen:	Synthetic peptide corresponding to the N-terminal sequence of human metallothionein (covering isoforms 1A, B, E, F, G, H, I, L, M, Q, S, Y, 2A).
Host:	Rabbit
Clonality:	Monoclonal
Clone ID:	N11-G
Isotype:	IgG
Conjugate:	Unconjugated
Product Form:	Liquid
Formulation:	Supplied in Tris Buffered Saline, pH 8.0, with 10 mg/ml BSA and 0.05% Sodium Azide.
Storage:	Shipped at 4°C. Upon delivery aliquot and store at -20°C. Avoid freeze / thaw cycles.
Disclaimer:	This product is for research use only. It is not intended for diagnostic or therapeutic use.

Images:



Western blot of metallothionein from rabbit liver. Lane 1: 1 µg of protein loaded. Lane 2: 3 µg of protein loaded. Lane 3: 5 µg of protein loaded.