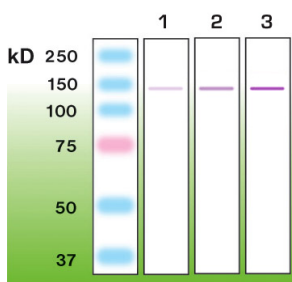


Anti-Nephrin Antibody [Y17-R] (A8263)

Specifications:

Name:	Anti-Nephrin Antibody [Y17-R]
Description:	Rabbit monoclonal (Y17-R) antibody to Nephrin.
Specificity:	This antibody recognizes the epitope located between Cys465 - Cys528.
Applications:	WB, ELISA, IP, ICC
Recommended Dilutions:	WB: 1:5,000, ELISA: 1:50,000-1:100,000.
Reactivity:	Human, Mouse, Rat
Immunogen:	Peptide derived from the centre of the fifth Ig-like domain of human nephrin.
Host:	Rabbit
Clonality:	Monoclonal
Clone ID:	Y17-R
Isotype:	IgG
Conjugate:	Unconjugated
Product Form:	Liquid
Formulation:	Supplied in Tris Buffered Saline, pH 8.0, with 10 mg/ml BSA and 0.05% Sodium Azide.
Storage:	Shipped at 4°C. Upon delivery aliquot and store at -20°C. Avoid freeze / thaw cycles.
Disclaimer:	This product is for research use only. It is not intended for diagnostic or therapeutic use.

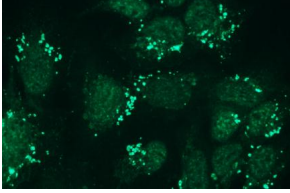
Images:



Western blot analysis of mouse nephrin. Lane 1: 50ng. Lane 2: 100ng. Lane 3: 200ng of recombinant mouse nephrin (extracellular domain, Gln 37 - Thr 1049).

Anti-Nephrin Antibody [Y17-R] (A8263)

Images continued:



Representative picture of Nephtrin expression in HEK293 cells, visualized with Anti-Nephrin Antibody (A8263). Primary antibody dilution: 1:700.