

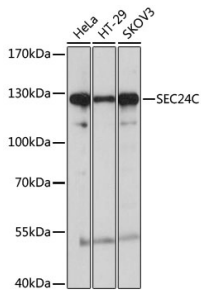
Anti-Sec24C Antibody (A8802)

Specifications:

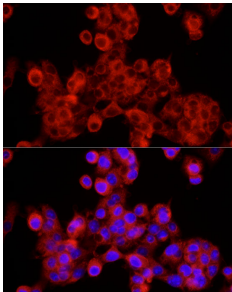
Name:	Anti-Sec24C Antibody
Description:	Rabbit polyclonal antibody to Sec24C.
Applications:	WB, ICC/IF
Recommended Dilutions:	WB: 1:500-1:2,000, ICC/IF: 1:50-1:200
Reactivity:	Human
Immunogen:	Recombinant fusion protein containing a sequence corresponding to amino acids 915-1094 of human SEC24C (NP_004913.2).
Sequence:	DVLQPGAEVTTDDRAYVRQLVTSMDVTETNVFFYPRLPLTKSPVESTTEPPAVRASE ERLSNGDIYLLLENGLNFLWVGASVQQGVVQSLFSVSSFSQITSGLSVLPVLDNPLSK KVRGLIDSLRAQRSRYMKLTVVKQEDKMEMLFKHFLVEDKSLSGGASYVDFLCHMHKE IRQLLS
Host:	Rabbit
Clonality:	Polyclonal
Isotype:	IgG
Conjugate:	Unconjugated
Purification:	Affinity purification.
Molecular Weight:	118 kDa
Product Form:	Liquid
Formulation:	Supplied in Phosphate Buffered Saline, pH 7.3, with 50% Glycerol and 0.01% Thiomersal.
Storage:	Shipped at 4°C. Upon delivery aliquot and store at -20°C. Avoid freeze / thaw cycles.
Disclaimer:	This product is for research use only. It is not intended for diagnostic or therapeutic use.

Anti-Sec24C Antibody (A8802)

Images:



Western blot analysis of extracts of various cell lines, using Anti-Sec24C Antibody (A8802) at 1:1,000 dilution. The secondary antibody was Goat Anti-Rabbit IgG H&L Antibody (HRP) at 1:10,000 dilution. Lysates/proteins were present at 25 μ g per lane. The blocking buffer used was 3% non-fat dry milk in TBST. Detection was with a ECL Basic Kit. Exposure time: 30s.



Immunofluorescence analysis of HepG2 cells using Anti-Sec24C Antibody (A8802) at a dilution of 1:100 (40x lens). DAPI was used to stain the cell nuclei (blue).