

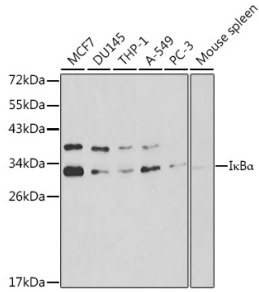
## Anti-IKB alpha Antibody (A80427)

### Specifications:

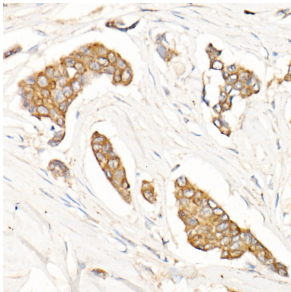
Name:	Anti-IKB alpha Antibody
Description:	Rabbit polyclonal antibody to IKB alpha.
Applications:	WB, IHC, ICC/IF
Recommended Dilutions:	WB: 1:500-1:2,000, IHC: 1:50-1:200, ICC/IF: 1:20-1:100
Reactivity:	Human, Mouse
Immunogen:	Recombinant fusion protein containing a sequence corresponding to amino acids 1-317 of human I $\kappa$ B $\alpha$ (NP_065390.1).
Sequence:	MFQAAERPQEWAMEGPRDGLKKERLLDDRHDSGLDSMKDEEYEQMVKELQEIRLEPQE VPRGSEPWKQQLTEDGDSFLHLAIHHEEKALTMENVIRQVKGDLAFLNLFQNNLQQTPLH LAVITNQPEIAEALLGAGCDPELRDFRGNTPHLACEQGCLASVGVLTQSCTTPHLHS ILKATNYNGHTCLHLASIHGYLGIVELLVSLGADVNAQEPNGRTALHLAVDLQNPDL VSLLLKCGADVNRVTYQGYSPYQLTWGRPSTRIQQQLGQLTLENLQMLPESEDEESYD TESEFTEFTEDELPHYDDCVFGGQRLTL
Host:	Rabbit
Clonality:	Polyclonal
Isotype:	IgG
Conjugate:	Unconjugated
Purification:	Affinity purification.
Molecular Weight:	32 kDa
Product Form:	Liquid
Formulation:	Supplied in Phosphate Buffered Saline, pH 7.3, with 50% Glycerol and 0.02% Sodium Azide.
Storage:	Shipped at 4°C. Upon delivery aliquot and store at -20°C. Avoid freeze / thaw cycles.
Disclaimer:	This product is for research use only. It is not intended for diagnostic or therapeutic use.

## Anti-IKB alpha Antibody (A80427)

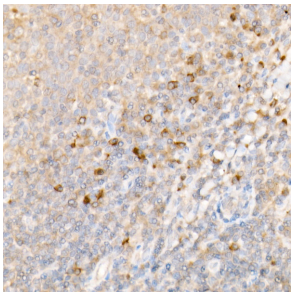
### Images:



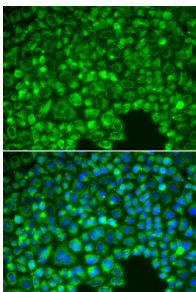
Western blot analysis of extracts of various cell lines, using Anti-IKB alpha Antibody (A80427) at 1:1,000 dilution. The secondary antibody was Goat Anti-Rabbit IgG H&L Antibody (HRP) at 1:10,000 dilution. Lysates/proteins were present at 25µg per lane. The blocking buffer used was 3% non-fat dry milk in TBST.



Immunohistochemistry analysis of paraffin-embedded human breast cancer tissue using Anti-IKB alpha Antibody (A80427) at a dilution of 1:100 (40x lens). Perform high pressure antigen retrieval with 10 mM citrate buffer pH 6.0 before commencing with IHC staining protocol.



Immunohistochemistry analysis of paraffin-embedded human tonsil using Anti-IKB alpha Antibody (A80427) at a dilution of 1:100 (40x lens). Perform high pressure antigen retrieval with 10 mM citrate buffer pH 6.0 before commencing with IHC staining protocol.



Immunofluorescence analysis of HeLa cells using Anti-IKB alpha Antibody (A80427). DAPI was used to stain the cell nuclei (blue).