

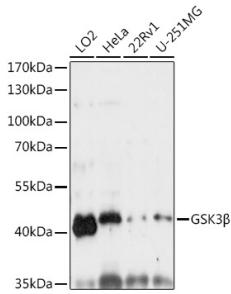
## Anti-GSK3 beta Antibody (A80524)

### Specifications:

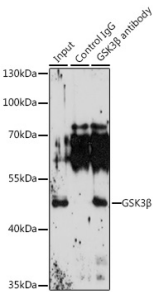
Name:	Anti-GSK3 beta Antibody
Description:	Rabbit polyclonal antibody to GSK3 beta.
Applications:	WB, IP
Recommended Dilutions:	WB: 1:500-1:1,000, IP: 1:50-1:100
Reactivity:	Human, Mouse, Rat
Immunogen:	A synthetic peptide corresponding to a sequence within amino acids 300 to the C-terminus of human GSK3 $\beta$ (NP_001139628.1).
Sequence:	PWTKVFRPRTPEAIALCSRLLLEYTPTARLTPLEACAHSFFDELDPNVKLPNGRDTP ALFNFTTQELSSNPPLATILIPPHARIQAAASTPTNATAASDANTGDRGQTNNAASAS ASNST
Host:	Rabbit
Clonality:	Polyclonal
Isotype:	IgG
Conjugate:	Unconjugated
Purification:	Affinity purification.
Molecular Weight:	46 kDa
Product Form:	Liquid
Formulation:	Supplied in Phosphate Buffered Saline, pH 7.3, with 50% Glycerol and 0.01% Thiomersal.
Storage:	Shipped at 4°C. Upon delivery aliquot and store at -20°C. Avoid freeze / thaw cycles.
Disclaimer:	This product is for research use only. It is not intended for diagnostic or therapeutic use.

## Anti-GSK3 beta Antibody (A80524)

### Images:



Western blot analysis of extracts of various cell lines, using Anti-GSK3 beta Antibody (A80524) at 1:1,000 dilution. The secondary antibody was Goat Anti-Rabbit IgG H&L Antibody (HRP) at 1:10,000 dilution. Lysates/proteins were present at 25µg per lane. The blocking buffer used was 3% non-fat dry milk in TBST. Detection was with a ECL Basic Kit. Exposure time: 30s.



Immunoprecipitation analysis of 200µg extracts of 22Rv1 cells using 3µg of Anti-GSK3 beta Antibody (A80524). This Western blot was performed on the immunoprecipitate using Anti-GSK3 beta Antibody (A80524) at a dilution of 1:1000.