

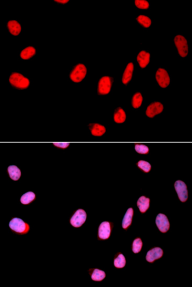
Anti-Cdc25C Antibody (A80571)

Specifications:

Name:	Anti-Cdc25C Antibody
Description:	Rabbit polyclonal antibody to Cdc25C.
Applications:	ICC/IF
Recommended Dilutions:	ICC/IF: 1:50-1:200
Reactivity:	Human
Immunogen:	Recombinant fusion protein containing a sequence corresponding to amino acids 174-473 of human CDC25C (NP_001781.2).
Sequence:	PKLDKNPNLGEDQAEEISDELMEFSLKDQEAKVSRSGLYRSPSPENLNRPRLKQVEK FKDNTIPDKVKKKYFSGQGKLRKGLCLKKTVSLCDITITQMLEEDSNQGHLIGDFSKV CALPTVSGKHQDLKYVNPETVAALLSGKFQGLIEKFYVIDCRYPYEYLGHHIQQALNL YSQEELFNFFLKKPIVPLDTQKRIIIIVFHCFSSERGPVMCRCLREEDRSLNQYPALY YPELYILKGGYRDFPFPEYMELCPEQSYCPMHHQDHKTELLRCRSQSKVQEGERQLREQ IALLVKDMSP
Host:	Rabbit
Clonality:	Polyclonal
Isotype:	IgG
Conjugate:	Unconjugated
Purification:	Affinity purification.
Product Form:	Liquid
Formulation:	Supplied in Phosphate Buffered Saline, pH 7.3, with 50% Glycerol and 0.02% Sodium Azide.
Storage:	Shipped at 4°C. Upon delivery aliquot and store at -20°C. Avoid freeze / thaw cycles.
Disclaimer:	This product is for research use only. It is not intended for diagnostic or therapeutic use.

Anti-Cdc25C Antibody (A80571)

Images:



Immunofluorescence analysis of U2OS cells using Anti-Cdc25C Antibody (A80571). DAPI was used to stain the cell nuclei (blue).