

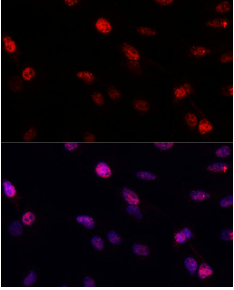
## Anti-BRCA1 Antibody (A80796)

### Specifications:

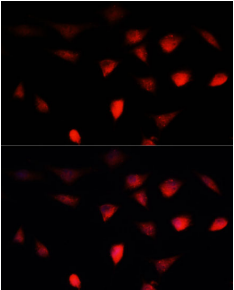
Name:	Anti-BRCA1 Antibody
Description:	Rabbit polyclonal antibody to BRCA1.
Applications:	ICC/IF
Recommended Dilutions:	ICC/IF: 1:50-1:200
Reactivity:	Human, Mouse, Rat
Immunogen:	Recombinant fusion protein containing a sequence corresponding to amino acids 400-699 of human BRCA1 (NP_009230.2).
Sequence:	LDDRWYMHSCSGSLQNRNYPSEELIKVVDVEEQQLEESGPHDLTETSYLPRQDLEGT PYLESGISLFSDDPESDPSEDRAPE SARVGNIPSSTSALKVPQLKVAESAQSPAAAHT TDTAGYNAMEESVSREKPELTASTERV NKRMSMVVSGLTPEEFMLVYKFARKHHITLT NLITEETTHVVMKTDAEFVCERTLKYFLGIAGGKVVVSYFWVTQSIKERKMLNEHDFE VRGDVVNGRNHQGPKRARESQRKIFRGGLEICCYGPFNTMPTGCPPNCGCAARCLDRG QWLPCNWADV
Host:	Rabbit
Clonality:	Polyclonal
Isotype:	IgG
Conjugate:	Unconjugated
Purification:	Affinity purification.
Product Form:	Liquid
Formulation:	Supplied in Phosphate Buffered Saline, pH 7.3, with 50% Glycerol and 0.02% Sodium Azide.
Storage:	Shipped at 4°C. Upon delivery aliquot and store at -20°C. Avoid freeze / thaw cycles.
Disclaimer:	This product is for research use only. It is not intended for diagnostic or therapeutic use.

## Anti-BRCA1 Antibody (A80796)

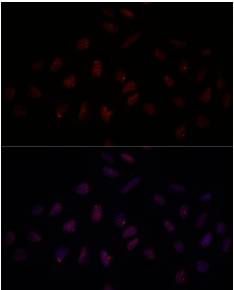
### Images:



Immunofluorescence analysis of C6 cells using Anti-BRCA1 Antibody (A80796) at a dilution of 1:100. DAPI was used to stain the cell nuclei (blue).



Immunofluorescence analysis of L929 cells using Anti-BRCA1 Antibody (A80796) at a dilution of 1:100. DAPI was used to stain the cell nuclei (blue).



Immunofluorescence analysis of U-2 OS cells using Anti-BRCA1 Antibody (A80796) at a dilution of 1:100. DAPI was used to stain the cell nuclei (blue).