

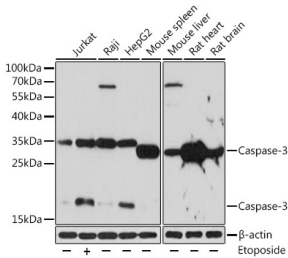
## Anti-Caspase-3 Antibody (A80913)

### Specifications:

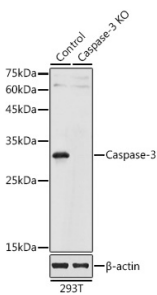
Name:	Anti-Caspase-3 Antibody
Description:	Rabbit polyclonal antibody to Caspase-3.
Applications:	WB, IHC, ICC/IF, IP
Recommended Dilutions:	WB: 1:500-1:1,000, IHC: 1:50-1:100, ICC/IF: 1:50-1:200, IP: 1:50-1:100
Reactivity:	Human, Mouse, Rat
Immunogen:	Recombinant fusion protein containing a sequence corresponding to amino acids 29-175 of human Caspase-3 (NP_004337.2).
Sequence:	SGISLDNSYKMDYPEMGLCIIINNKNFHKSTGMTSRSGTDVDAANLRETFRNLLKYEVR NKNDLRTREEIVELMRDVSKEHHSKRSSFVCVLLSHGEEGIIFGTNGPVDLKKITNFFR GDRCSRSLTGKPKLFIQACRGTELDGCIETD
Host:	Rabbit
Clonality:	Polyclonal
Isotype:	IgG
Conjugate:	Unconjugated
Purification:	Affinity purification.
Molecular Weight:	17 kDa / 35 kDa
Product Form:	Liquid
Formulation:	Supplied in Phosphate Buffered Saline, pH 7.3, with 50% Glycerol and 0.01% Thiomersal.
Storage:	Shipped at 4°C. Upon delivery aliquot and store at -20°C. Avoid freeze / thaw cycles.
Disclaimer:	This product is for research use only. It is not intended for diagnostic or therapeutic use.

## Anti-Caspase-3 Antibody (A80913)

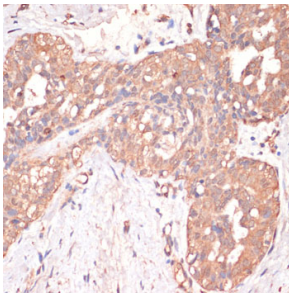
### Images:



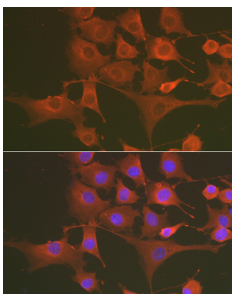
Western blot analysis of extracts of various cell lines, using Anti-Caspase-3 Antibody (A80913) at 1:1,000 dilution. Jurkat cells were treated by Etoposide (25  $\mu$ M) at 37°C for 5 hours. The secondary antibody was Goat Anti-Rabbit IgG H&L Antibody (HRP) at 1:10,000 dilution. Lysates/proteins were present at 25 $\mu$ g per lane. The blocking buffer used was 3% BSA. Detection was with a ECL Basic Kit. Exposure time: 3min.



Western blot analysis of extracts from normal (control) and Caspase-3 knockout (KO) 293T cells, using Anti-Caspase-3 Antibody (A80913) at 1:1,000 dilution. The secondary antibody was Goat Anti-Rabbit IgG H&L Antibody (HRP) at 1:10,000 dilution. Lysates/proteins were present at 25 $\mu$ g per lane. The blocking buffer used was 3% non-fat dry milk in TBST. Detection was with a ECL Basic Kit. Exposure time: 5s.



Immunohistochemistry analysis of paraffin-embedded human mammary cancer using Anti-Caspase-3 Antibody (A80913) at a dilution of 1:200 (40x lens). Perform microwave antigen retrieval with 10 mM PBS buffer pH 7.2 before commencing with IHC staining protocol.



Immunofluorescence analysis of NIH/3T3 cells using Anti-Caspase-3 Antibody (A80913) at a dilution of 1:100 (40x lens). DAPI was used to stain the cell nuclei (blue).