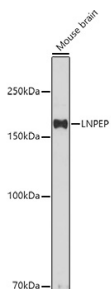


## Anti-LNPEP Antibody (A80914)

### Specifications:

|                        |   |
|------------------------|---|
| Name:                  | Anti-LNPEP Antibody   |
| Description:           | Rabbit polyclonal antibody to LNPEP.  |
| Applications:          | WB, IHC   |
| Recommended Dilutions: | WB: 1:100-1:500, IHC: 1:50-1:200  |
| Reactivity:            | Human, Mouse, Rat   |
| Immunogen:             | Recombinant fusion protein containing a sequence corresponding to amino acids 1-110 of human LNPEP (NP_005566.2).   |
| Sequence:              | MEPFTNDRLQLPRNMIENSMFEEEPDVVDLAKEPCLHPLEPDEVEYEPGRSRLLV RGL<br>GEHEMEEDEEDYESSAKLLGMSFMNRSSGLRNSATGYRQSPDGACSVPSART |
| Host:                  | Rabbit  |
| Clonality:             | Polyclonal  |
| Isotype:               | IgG   |
| Conjugate:             | Unconjugated  |
| Purification:          | Affinity purification.  |
| Molecular Weight:      | 165 kDa   |
| Product Form:          | Liquid  |
| Formulation:           | Supplied in Phosphate Buffered Saline, pH 7.3, with 50% Glycerol and 0.01% Thiomersal.                              |
| Storage:               | Shipped at 4°C. Upon delivery aliquot and store at -20°C. Avoid freeze / thaw cycles.                               |
| Disclaimer:            | This product is for research use only. It is not intended for diagnostic or therapeutic use.                        |

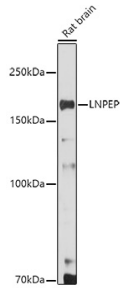
### Images:



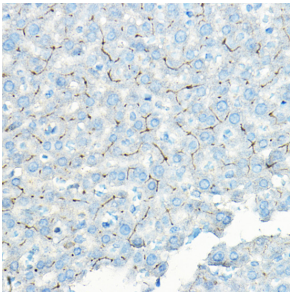
Western blot analysis of extracts of Mouse brain, using Anti-LNPEP Antibody (A80914) at 1:500 dilution. The secondary antibody was Goat Anti-Rabbit IgG H&L Antibody (HRP) at 1:10,000 dilution. Lysates/proteins were present at 25 $\mu$ g per lane. The blocking buffer used was 3% non-fat dry milk in TBST. Detection was with a ECL Basic Kit. Exposure time: 180s.

## Anti-LNPEP Antibody (A80914)

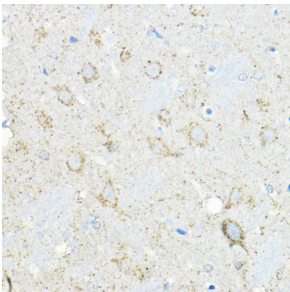
Images continued:



Western blot analysis of extracts of Rat brain, using Anti-LNPEP Antibody (A80914) at 1:500 dilution. The secondary antibody was Goat Anti-Rabbit IgG H&L Antibody (HRP) at 1:10,000 dilution. Lysates/proteins were present at 25 $\mu$ g per lane. The blocking buffer used was 3% non-fat dry milk in TBST. Detection was with a ECL Enhanced Kit (RM00021). Exposure time: 180s.



Immunohistochemistry analysis of paraffin-embedded rat liver using Anti-LNPEP Antibody (A80914) at a dilution of 1:100 (40x lens). Perform high pressure antigen retrieval with 10 mM citrate buffer pH 6.0 before commencing with IHC staining protocol.



Immunohistochemistry analysis of paraffin-embedded rat brain using Anti-LNPEP Antibody (A80914) at a dilution of 1:100 (40x lens). Perform high pressure antigen retrieval with 10 mM citrate buffer pH 6.0 before commencing with IHC staining protocol.