

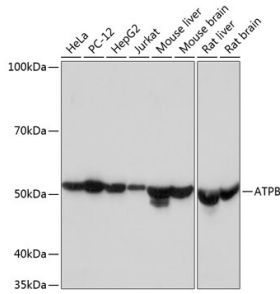
## Anti-ATPB Antibody [ARC53533] (A81028)

### Specifications:

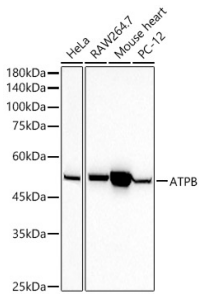
Name:	Anti-ATPB Antibody [ARC53533]
Description:	Rabbit monoclonal [ARC53533] antibody to ATPB.
Applications:	WB, IHC, ICC/IF
Recommended Dilutions:	WB: 1:2,000-1:20,000, IHC: 1:50-1:200, ICC/IF: 1:50-1:200
Reactivity:	Human, Mouse, Rat
Immunogen:	Recombinant fusion protein containing a sequence corresponding to amino acids 230-529 of human ATPB (NP_001677.2).
Sequence:	YSVFAGVGERTREGNDLYHEMIESGVINLKDATSKVALVYGQMNEPPGARARVALTGL TVAEYFRDQEGQDVLFFIDNIFRFTQAGSEVSALLGRIPSAVGYQPTLATDMGTMQER ITTTKKSITSVQAIYVPADDLTDPAATTF AHLDATTVLSRAIAELGIYPAVDPLDS TSRIMDPNIVGSEHYDVARGVQKILQDYKSLQDIILGMDELSEEDKLTVSRARKIQ RFLSQPFQVAEVFTGHMGKLVPLKETIKGFQQILAGEYDHLPEQAFYMVGPPIEEAVAK ADKLAEHSS
Host:	Rabbit
Clonality:	Monoclonal
Clone ID:	ARC53533
Isotype:	IgG
Conjugate:	Unconjugated
Purification:	Affinity purification.
Molecular Weight:	57 kDa
Product Form:	Liquid
Formulation:	Supplied in Phosphate Buffered Saline, pH 7.3, with 50% Glycerol, 0.05% BSA, and 0.05% Proclin 300.
Storage:	Shipped at 4°C. Upon delivery aliquot and store at -20°C. Avoid freeze / thaw cycles.
Disclaimer:	This product is for research use only. It is not intended for diagnostic or therapeutic use.

## Anti-ATPB Antibody [ARC53533] (A81028)

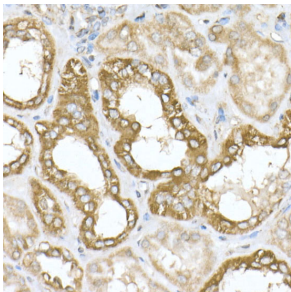
### Images:



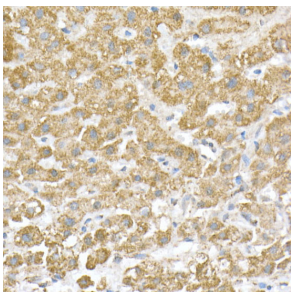
Western blot analysis of extracts of various cell lines, using Anti-ATPB Antibody [ARC53533] (A81028) at 1:1,000 dilution. The secondary antibody was Goat Anti-Rabbit IgG H&L Antibody (HRP) at 1:10,000 dilution. Lysates/proteins were present at 25µg per lane. The blocking buffer used was 3% non-fat dry milk in TBST. Detection was with a ECL Basic Kit. Exposure time: 1s.



Western blot analysis of extracts of various cell lines, using Anti-ATPB Antibody [ARC53533] (A81028) at 1:20,000 dilution. The secondary antibody was Goat Anti-Rabbit IgG H&L Antibody (HRP) at 1:10,000 dilution. Lysates/proteins were present at 25µg per lane. The blocking buffer used was 3% non-fat dry milk in TBST. Detection was with a ECL Basic Kit. Exposure time: 10s.



Immunohistochemistry analysis of paraffin-embedded human kidney using Anti-ATPB Antibody [ARC53533] (A81028) at a dilution of 1:100 (40x lens). Perform high pressure antigen retrieval with 10 mM citrate buffer pH 6.0 before commencing with IHC staining protocol.



Immunohistochemistry analysis of paraffin-embedded human liver using Anti-ATPB Antibody [ARC53533] (A81028) at a dilution of 1:100 (40x lens). Perform high pressure antigen retrieval with 10 mM citrate buffer pH 6.0 before commencing with IHC staining protocol.