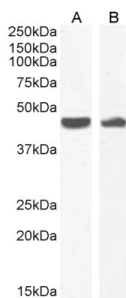


Anti-alpha smooth muscle Actin Antibody (A82445)

Specifications:

| | |
|----------------|---|
| Name: | Anti-alpha smooth muscle Actin Antibody |
| Description: | Goat polyclonal antibody to alpha smooth muscle Actin. |
| Applications: | ELISA, WB, IHC |
| Reactivity: | Human, Rat |
| Immunogen: | Synthetic peptide corresponding to Human ACTA2 (N terminal). |
| Sequence: | EEEDSTALVC |
| Host: | Goat |
| Clonality: | Polyclonal |
| Isotype: | IgG |
| Conjugate: | Unconjugated |
| Purification: | Purified from goat serum by ammonium sulphate precipitation followed by antigen affinity chromatography using the immunizing peptide. |
| Concentration: | 100 µg at 0.5 mg/ml. |
| Product Form: | Liquid |
| Formulation: | Supplied in Tris Buffered Saline, pH 7.30, with 0.02% Sodium Azide and 0.5% BSA. |
| Storage: | Shipped at 4°C. Upon delivery aliquot and store at -20°C. Avoid freeze / thaw cycles. |
| Disclaimer: | This product is for research use only. It is not intended for diagnostic or therapeutic use. |

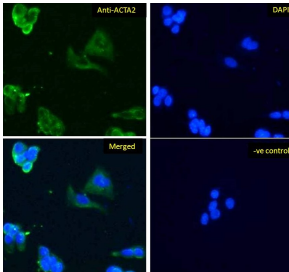
Images:



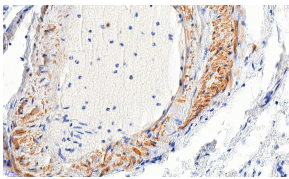
Anti-alpha smooth muscle Actin Antibody (A82445) (0.1 µg/ml) staining of HeLa (A) and (1 µg/ml) NIH3T3 (B) cell lysate (35 µg protein in RIPA buffer). Detected by chemiluminescence.

Anti-alpha smooth muscle Actin Antibody (A82445)

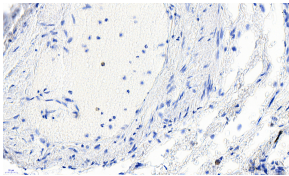
Images continued:



Anti-alpha smooth muscle Actin Antibody (A82445) - Immunofluorescence analysis of paraformaldehyde fixed HepG2 cells, permeabilized with 0.15% Triton. Primary incubation 1hr (10 μ g/ml) followed by Alexa Fluor 488 secondary antibody (1 μ g/ml), showing cytoplasmic staining.



Anti-alpha smooth muscle Actin Antibody (A82445) (3.5 μ g/ml) staining of paraffin embedded Human Lung. Heat induced antigen retrieval with citrate buffer pH 6, HRP-staining.



Anti-alpha smooth muscle Actin Antibody (A82445) - Negative Control showing staining of paraffin embedded Human Lung, with no primary antibody.