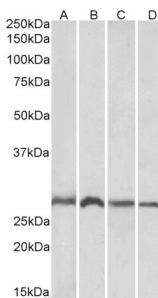


## Anti-SIAH1 Antibody (A82459)

### Specifications:

Name:	Anti-SIAH1 Antibody
Description:	Goat polyclonal antibody to SIAH1.
Applications:	ELISA, WB
Reactivity:	Human, Mouse, Rat
Immunogen:	Synthetic peptide corresponding to Human SIAH1 (N terminal).
Sequence:	SRQTATALPTGTSKC
Host:	Goat
Clonality:	Polyclonal
Isotype:	IgG
Conjugate:	Unconjugated
Purification:	Purified from goat serum by ammonium sulphate precipitation followed by antigen affinity chromatography using the immunizing peptide.
Concentration:	100 µg at 0.5 mg/ml.
Product Form:	Liquid
Formulation:	Supplied in Tris Buffered Saline, pH 7.30, with 0.02% Sodium Azide and 0.5% BSA.
Storage:	Shipped at 4°C. Upon delivery aliquot and store at -20°C. Avoid freeze / thaw cycles.
Disclaimer:	This product is for research use only. It is not intended for diagnostic or therapeutic use.

### Images:



Anti-SIAH1 Antibody (A82459) (1µg/ml) staining of Mouse (A, C) and Rat (B, D) Brain (A, B) and Liver (C, D) lysates (35µg protein in RIPA buffer). Primary incubation was 1 hour. Detected by chemiluminescence.

## Anti-SIAH1 Antibody (A82459)

Images continued:



Anti-SIAH1 Antibody (A82459) staining (1  $\mu$ g/ml) of Human Liver lysate (RIPA buffer, 35  $\mu$ g total protein per lane). Primary incubated for 1 hour. Detected by chemiluminescence.