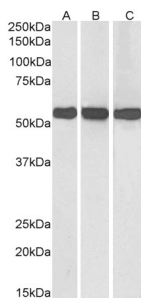


## Anti-GLUD1 + GLUD2 Antibody (A82841)

### Specifications:

Name:	Anti-GLUD1 + GLUD2 Antibody
Description:	Goat polyclonal antibody to GLUD1 + GLUD2.
Applications:	ELISA, WB, IF, IHC
Reactivity:	Human, Mouse, Rat
Immunogen:	Synthetic peptide corresponding to Human GLUD1 / GLUD2 (internal region).
Sequence:	C-ESEEQKRNRVRGILR
Host:	Goat
Clonality:	Polyclonal
Isotype:	IgG
Conjugate:	Unconjugated
Purification:	Purified from goat serum by ammonium sulphate precipitation followed by antigen affinity chromatography using the immunizing peptide.
Concentration:	100 µg at 0.5 mg/ml.
Product Form:	Liquid
Formulation:	Supplied in Tris Buffered Saline, pH 7.30, with 0.02% Sodium Azide and 0.5% BSA.
Storage:	Shipped at 4°C. Upon delivery aliquot and store at -20°C. Avoid freeze / thaw cycles.
Disclaimer:	This product is for research use only. It is not intended for diagnostic or therapeutic use.

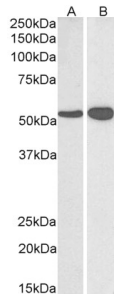
### Images:



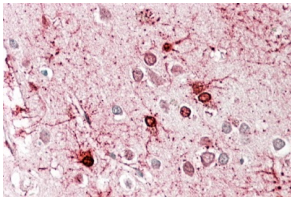
Anti-GLUD1 / GLUD2 Antibody (A82841) (0.01µg/ml) staining of Human (A), Mouse (B) and Rat (C) Liver lysate (35µg protein in RIPA buffer). Primary incubation was 1 hour. Detected by chemiluminescence.

## Anti-GLUD1 + GLUD2 Antibody (A82841)

Images continued:



Anti-GLUD1 / GLUD2 Antibody (A82841) (0.03 $\mu$ g/ml) staining of Human (A) and Mouse (B) Brain lysate (35 $\mu$ g protein in RIPA buffer). Primary incubation was 1 hour. Detected by chemiluminescence.



Anti-GLUD1 / GLUD2 Antibody (A82841) (3.8 $\mu$ g/ml) staining of paraffin embedded Human Cerebral Cortex. Steamed antigen retrieval with citrate buffer pH 6, AP-staining.