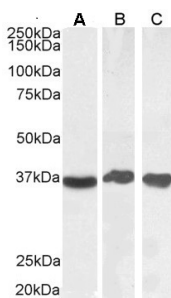


Anti-GAPDH Antibody (A82908)

Specifications:

Name:	Anti-GAPDH Antibody
Description:	Goat polyclonal antibody to GAPDH.
Applications:	ELISA, WB, IHC, IF
Reactivity:	Human
Immunogen:	Synthetic peptide corresponding to Human GAPDH (internal region).
Sequence:	C-GVNHEKYDNSLK
Host:	Goat
Clonality:	Polyclonal
Isotype:	IgG
Conjugate:	Unconjugated
Purification:	Purified from goat serum by ammonium sulphate precipitation followed by antigen affinity chromatography using the immunizing peptide.
Concentration:	100 µg at 0.5 mg/ml.
Product Form:	Liquid
Formulation:	Supplied in Tris Buffered Saline, pH 7.30, with 0.02% Sodium Azide and 0.5% BSA.
Storage:	Shipped at 4°C. Upon delivery aliquot and store at -20°C. Avoid freeze / thaw cycles.
Disclaimer:	This product is for research use only. It is not intended for diagnostic or therapeutic use.

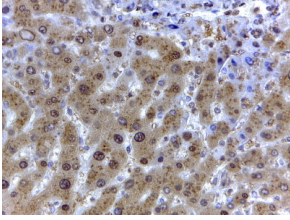
Images:



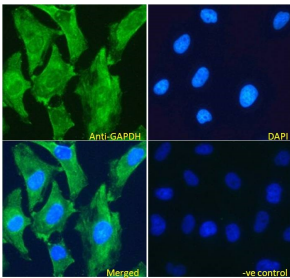
Anti-GAPDH Antibody (A82908) (0.1 µg/ml) staining of Human Liver (A), (0.03 µg/ml) Testes (B) and Tonsil (C) lysate (35 µg protein in RIPA buffer). Detected by chemiluminescence.

Anti-GAPDH Antibody (A82908)

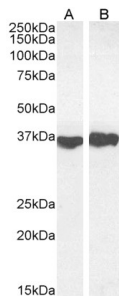
Images continued:



Anti-GAPDH Antibody (A82908) (2 μ g/ml) staining of paraffin embedded Human Liver. Steamed antigen retrieval with citrate buffer pH 6, HRP-staining.



Anti-GAPDH Antibody (A82908) - Immunofluorescence analysis of paraformaldehyde fixed HeLa cells, permeabilized with 0.15% Triton. Primary incubation 1hr (5 μ g/ml) followed by Alexa Fluor 488 secondary antibody (2 μ g/ml), showing cytoplasmic and plasma membrane staining. The nuclear stain is DAPI (blue). Negative control: Unimmunized goat IgG (5 μ g/ml) followed by Alexa Fluor 488 secondary antibody (2 μ g/ml).



Anti-GAPDH Antibody (A82908) (0.1 μ g/ml) staining of Mouse Liver (A) and (0.03 μ g/ml) Rat Heart (B) lysate (35 μ g protein in RIPA buffer). Detected by chemiluminescence.