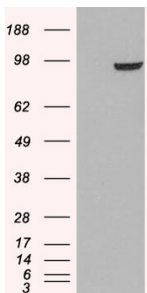


## Anti-PDE5A Antibody (A83168)

### Specifications:

Name:	Anti-PDE5A Antibody
Description:	Goat polyclonal antibody to PDE5A.
Applications:	ELISA, WB, IF, FC
Reactivity:	Human
Immunogen:	Synthetic peptide corresponding to Human PDE5A (C terminal).
Sequence:	C-LINGESGQAKRN
Host:	Goat
Clonality:	Polyclonal
Isotype:	IgG
Conjugate:	Unconjugated
Purification:	Purified from goat serum by ammonium sulphate precipitation followed by antigen affinity chromatography using the immunizing peptide.
Concentration:	100 µg at 0.5 mg/ml.
Product Form:	Liquid
Formulation:	Supplied in Tris Buffered Saline, pH 7.30, with 0.02% Sodium Azide and 0.5% BSA.
Storage:	Shipped at 4°C. Upon delivery aliquot and store at -20°C. Avoid freeze / thaw cycles.
Disclaimer:	This product is for research use only. It is not intended for diagnostic or therapeutic use.

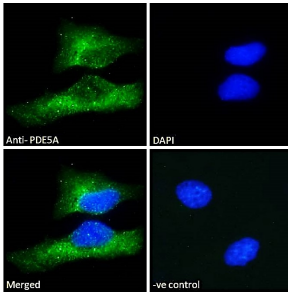
### Images:



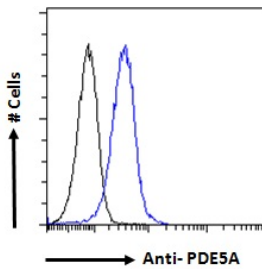
HEK293 overexpressing PDE5A (RC218974) and probed with Anti-PDE5A Antibody (A83168) (mock transfection in first lane).

## Anti-PDE5A Antibody (A83168)

Images continued:



Anti-PDE5A Antibody (A83168) - Immunofluorescence analysis of paraformaldehyde fixed HeLa cells, permeabilized with 0.15% Triton. Primary incubation 1hr (10 $\mu$ g/ml) followed by Alexa Fluor 488 secondary antibody (2 $\mu$ g/ml), showing cytoplasmic staining.



Anti-PDE5A Antibody (A83168) - Flow cytometric analysis of paraformaldehyde fixed HEK293 cells (blue line), permeabilized with 0.5% Triton. Primary incubation 1hr (10 $\mu$ g/ml) followed by Alexa Fluor 488 secondary antibody (1 $\mu$ g/ml). IgG control: Unimmunized goat IgG (black line) followed by Alexa Fluor 488 secondary antibody.