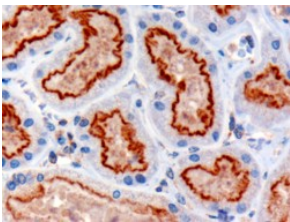


Anti-IFT88 Antibody (A83301)

Specifications:

Name:	Anti-IFT88 Antibody
Description:	Goat polyclonal antibody to IFT88.
Applications:	ELISA, IHC, IF
Reactivity:	Human, Mouse
Immunogen:	Synthetic peptide corresponding to Human IFT88 (C terminal).
Sequence:	C-KKRIDEDDFADEE
Host:	Goat
Clonality:	Polyclonal
Isotype:	IgG
Conjugate:	Unconjugated
Purification:	Purified from goat serum by ammonium sulphate precipitation followed by antigen affinity chromatography using the immunizing peptide.
Concentration:	100 µg at 0.5 mg/ml.
Product Form:	Liquid
Formulation:	Supplied in Tris Buffered Saline, pH 7.30, with 0.02% Sodium Azide and 0.5% BSA.
Storage:	Shipped at 4°C. Upon delivery aliquot and store at -20°C. Avoid freeze / thaw cycles.
Disclaimer:	This product is for research use only. It is not intended for diagnostic or therapeutic use.

Images:



Anti-IFT88 Antibody (A83301) (3µg/ml) staining of paraffin embedded Human Kidney. Microwaved antigen retrieval with Tris/EDTA buffer pH9, HRP-staining.