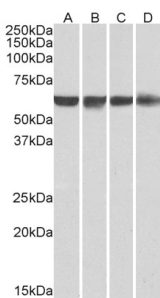


Anti-PTBP1 Antibody (A83482)

Specifications:

Name:	Anti-PTBP1 Antibody
Description:	Goat polyclonal antibody to PTBP1.
Applications:	ELISA, WB, IHC
Reactivity:	Human, Mouse, Rat
Immunogen:	Synthetic peptide corresponding to Human PTBP1 (N terminal).
Sequence:	DGIVPDIAVGTKR-C
Host:	Goat
Clonality:	Polyclonal
Isotype:	IgG
Conjugate:	Unconjugated
Purification:	Purified from goat serum by ammonium sulphate precipitation followed by antigen affinity chromatography using the immunizing peptide.
Concentration:	100 µg at 0.5 mg/ml.
Product Form:	Liquid
Formulation:	Supplied in Tris Buffered Saline, pH 7.30, with 0.02% Sodium Azide and 0.5% BSA.
Storage:	Shipped at 4°C. Upon delivery aliquot and store at -20°C. Avoid freeze / thaw cycles.
Disclaimer:	This product is for research use only. It is not intended for diagnostic or therapeutic use.

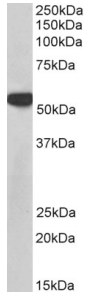
Images:



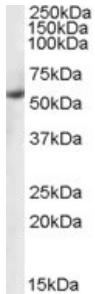
Anti-PTBP1 Antibody (A83482) (0.01µg/ml) staining of HeLa (A), HepG2 (B), Jurkat (C) and HEK293 (D) nuclear lysates (35µg protein in RIPA buffer). Primary incubation was 1 hour. Detected by chemiluminescence.

Anti-PTBP1 Antibody (A83482)

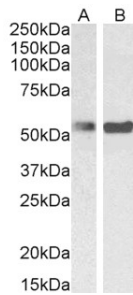
Images continued:



Anti-PTBP1 Antibody (A83482) (0.03 μ g/ml) staining of lysates of cell line NIH3T3 (35 μ g protein in RIPA buffer). Primary incubation was 1 hour. Detected by chemiluminescence.



Anti-PTBP1 Antibody (A83482) (0.1 μ g/ml) staining of Human Ovary lysate (35 μ g protein in RIPA buffer). Primary incubation was 1 hour. Detected by chemiluminescence.



Anti-PTBP1 Antibody (A83482) (0.1-0.3 μ g/ml) staining of Mouse Ovary (A) and Rat Ovary (B) lysate (35 μ g protein in RIPA buffer). Primary incubation was 1 hour. Detected by chemiluminescence.