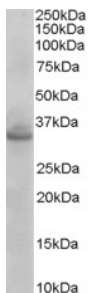


Anti-Syntaxin 1A + Syntaxin 1B2 Antibody (A83676)

Specifications:

| | |
|----------------|---------------------------------------------------------------------------------------------------------------------------------------|
| Name: | Anti-Syntaxin 1A + Syntaxin 1B2 Antibody |
| Description: | Goat polyclonal antibody to Syntaxin 1A + Syntaxin 1B2. |
| Applications: | ELISA, WB |
| Reactivity: | Mouse |
| Immunogen: | Synthetic peptide corresponding to Human STX1A / STX1B (N terminal). |
| Sequence: | KDRTQELRTAKD-C |
| Host: | Goat |
| Clonality: | Polyclonal |
| Isotype: | IgG |
| Conjugate: | Unconjugated |
| Purification: | Purified from goat serum by ammonium sulphate precipitation followed by antigen affinity chromatography using the immunizing peptide. |
| Concentration: | 100 µg at 0.5 mg/ml. |
| Product Form: | Liquid |
| Formulation: | Supplied in Tris Buffered Saline, pH 7.30, with 0.02% Sodium Azide and 0.5% BSA. |
| Storage: | Shipped at 4°C. Upon delivery aliquot and store at -20°C. Avoid freeze / thaw cycles. |
| Disclaimer: | This product is for research use only. It is not intended for diagnostic or therapeutic use. |

Images:



Anti-STX1A / STX1B Antibody (A83676) (0.003µg/ml) staining of Mouse Brain lysate (35µg protein in RIPA buffer). Primary incubation was 1 hour. Detected by chemiluminescence.