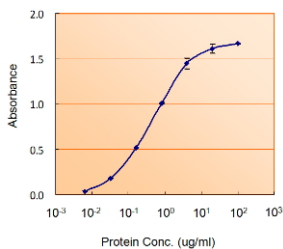


Anti-GFAP Antibody (A83720)

Specifications:

Name:	Anti-GFAP Antibody
Description:	Goat polyclonal antibody to GFAP.
Applications:	ELISA, WB
Reactivity:	Human, Mouse, Rat
Immunogen:	Synthetic peptide corresponding to Human GFAP (C terminal).
Sequence:	C-DGEVIKESKQEHKD
Host:	Goat
Clonality:	Polyclonal
Isotype:	IgG
Conjugate:	Unconjugated
Purification:	Purified from goat serum by ammonium sulphate precipitation followed by antigen affinity chromatography using the immunizing peptide.
Concentration:	100 µg at 0.5 mg/ml.
Product Form:	Liquid
Formulation:	Supplied in Tris Buffered Saline, pH 7.30, with 0.02% Sodium Azide and 0.5% BSA.
Storage:	Shipped at 4°C. Upon delivery aliquot and store at -20°C. Avoid freeze / thaw cycles.
Disclaimer:	This product is for research use only. It is not intended for diagnostic or therapeutic use.

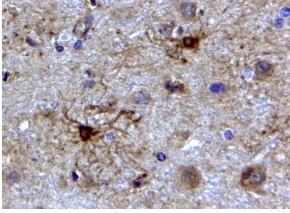
Images:



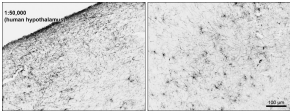
Anti-GFAP Antibody (A83720) (5µg/ml) as the reporter with Anti-GFAP Antibody as the capture rabbit antibody (5µg/ml).

Anti-GFAP Antibody (A83720)

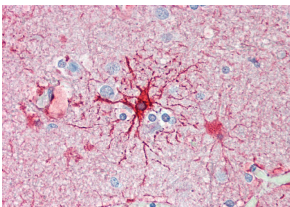
Images continued:



Anti-GFAP Antibody (A83720) (2 μ g/ml) staining of paraffin embedded Human Cerebellum. Steamed antigen retrieval with citrate buffer pH 6, HRP-staining.



Anti-GFAP Antibody (A83720) (0.01 μ g/ml) staining of PFA-perfused cryosection of Human Hypothalamus. Antigen retrieval with citrate buffer pH 6 at 80C for 30min, HRP-staining with Ni-DAB after Biotin-SP-antigoat amplification.



Anti-GFAP Antibody (A83720) (5 μ g/ml) staining of paraffin embedded Human Cortex. Steamed antigen retrieval with citrate buffer pH 6, AP-staining.