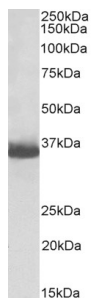


## Anti-GAPDH Antibody (A83723)

### Specifications:

Name:	Anti-GAPDH Antibody
Description:	Goat polyclonal antibody to GAPDH (Biotin).
Applications:	ELISA, WB
Reactivity:	Human, Mouse, Rat
Immunogen:	Synthetic peptide corresponding to Human GAPDH (C terminal).
Sequence:	C-HQVSSDFNSDT
Host:	Goat
Clonality:	Polyclonal
Isotype:	IgG
Conjugate:	Biotin
Purification:	Purified from goat serum by ammonium sulphate precipitation followed by antigen affinity chromatography using the immunizing peptide.
Concentration:	100 µg at 0.5 mg/ml.
Product Form:	Liquid
Formulation:	Supplied in Tris Buffered Saline, pH 7.30, with 0.02% Sodium Azide and 0.5% BSA.
Storage:	Shipped at 4°C. Upon delivery aliquot and store at -20°C. Avoid freeze / thaw cycles.
Disclaimer:	This product is for research use only. It is not intended for diagnostic or therapeutic use.

### Images:



Anti-GAPDH Antibody (A83723 | Biotin) (0.5µg/ml) staining of HEK293 lysate (35µg protein in RIPA buffer). Primary incubation was 1 hour. Detected by chemiluminescence, using streptavidin-HRP and using NAP blocker as a substitute for skimmed milk.