

Anti-SAR1B Antibody (A83745)

Specifications:

Name:	Anti-SAR1B Antibody
Description:	Goat polyclonal antibody to SAR1B .
Applications:	ELISA, WB
Reactivity:	Mouse, Rat
Immunogen:	Synthetic peptide corresponding to Human SAR1B (internal region).
Sequence:	C-DHERLLESKEELD
Host:	Goat
Clonality:	Polyclonal
Isotype:	IgG
Conjugate:	Unconjugated
Purification:	Purified from goat serum by ammonium sulphate precipitation followed by antigen affinity chromatography using the immunizing peptide.
Concentration:	100 µg at 0.5 mg/ml.
Product Form:	Liquid
Formulation:	Supplied in Tris Buffered Saline, pH 7.30, with 0.02% Sodium Azide and 0.5% BSA.
Storage:	Shipped at 4°C. Upon delivery aliquot and store at -20°C. Avoid freeze / thaw cycles.
Disclaimer:	This product is for research use only. It is not intended for diagnostic or therapeutic use.

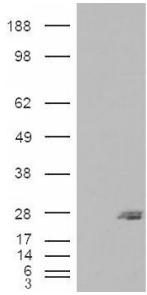
Images:



Anti-SAR1B Antibody (A83745) (0.03 µg/ml) staining of Mouse Liver lysate (35 µg protein in RIPA buffer). Primary incubation was 1 hour. Detected by chemiluminescence.

Anti-SAR1B Antibody (A83745)

Images continued:



HEK293 overexpressing SAR1B (RC210593) and probed with Anti-SAR1B Antibody (A83745) (mock transfection in first lane), tested by Origene.