

Anti-PPP1R15A Antibody (A83758)

Specifications:

Name:	Anti-PPP1R15A Antibody
Description:	Goat polyclonal antibody to PPP1R15A.
Applications:	ELISA, WB, IHC, IF, FC
Reactivity:	Human
Immunogen:	Synthetic peptide corresponding to Human PPP1R15A (C terminal).
Sequence:	C-AAALDLSGRRG
Host:	Goat
Clonality:	Polyclonal
Isotype:	IgG
Conjugate:	Unconjugated
Purification:	Purified from goat serum by ammonium sulphate precipitation followed by antigen affinity chromatography using the immunizing peptide.
Concentration:	100 µg at 0.5 mg/ml.
Product Form:	Liquid
Formulation:	Supplied in Tris Buffered Saline, pH 7.30, with 0.02% Sodium Azide and 0.5% BSA.
Storage:	Shipped at 4°C. Upon delivery aliquot and store at -20°C. Avoid freeze / thaw cycles.
Disclaimer:	This product is for research use only. It is not intended for diagnostic or therapeutic use.

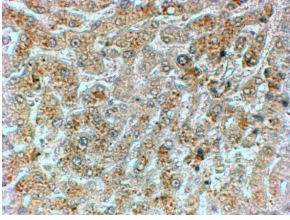
Images:



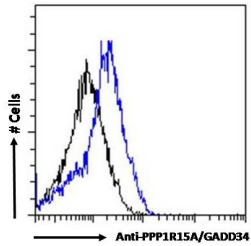
Anti-PPP1R15A Antibody (A83758) (0.3µg/ml) staining of HepG2 (A) and negative control KLY (B) lysate (35µg protein in RIPA buffer) Detected by chemiluminescence.

Anti-PPP1R15A Antibody (A83758)

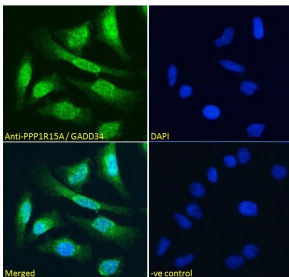
Images continued:



Anti-PPP1R15A Antibody (A83758) (2 μ g/ml) staining of paraffin embedded Human Liver. Steamed antigen retrieval with citrate buffer pH 6, HRP-staining.



Anti-PPP1R15A Antibody (A83758) Flow cytometric analysis of paraformaldehyde fixed HepG2 cells (blue line), permeabilized with 0.5% Triton. Primary incubation 1hr (10 μ g/ml) followed by Alexa Fluor 488 secondary antibody (0.4 μ g/ml). IgG control: Unimmunized goat IgG (black line) followed by Alexa Fluor 488 secondary antibody.



Anti-PPP1R15A Antibody (A83758) Immunofluorescence analysis of paraformaldehyde fixed HeLa cells, permeabilized with 0.15% Triton. Primary incubation 1hr (10 μ g/ml) followed by Alexa Fluor 488 secondary antibody (4 μ g/ml), showing strong nuclear and some cytoplasmic staining. The nuclear stain is DAPI (blue). Negative control: Unimmunized goat IgG (10 μ g/ml) followed by Alexa Fluor 488 secondary antibody (4 μ g/ml).