

Anti-TFEB Antibody (A83834)

Specifications:

| | |
|----------------|---|
| Name: | Anti-TFEB Antibody |
| Description: | Goat polyclonal antibody to TFEB. |
| Applications: | ELISA, WB |
| Reactivity: | Human |
| Immunogen: | Synthetic peptide corresponding to Human TFEB (N terminal). |
| Sequence: | ASRIGLRMQLMRE-C |
| Host: | Goat |
| Clonality: | Polyclonal |
| Isotype: | IgG |
| Conjugate: | Unconjugated |
| Purification: | Purified from goat serum by ammonium sulphate precipitation followed by antigen affinity chromatography using the immunizing peptide. |
| Concentration: | 100 µg at 0.5 mg/ml. |
| Product Form: | Liquid |
| Formulation: | Supplied in Tris Buffered Saline, pH 7.30, with 0.02% Sodium Azide and 0.5% BSA. |
| Storage: | Shipped at 4°C. Upon delivery aliquot and store at -20°C. Avoid freeze / thaw cycles. |
| Disclaimer: | This product is for research use only. It is not intended for diagnostic or therapeutic use. |

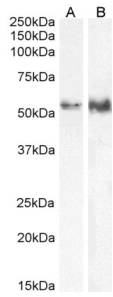
Images:



Anti-TFEB Antibody (A83834) (1.0 µg/ml) staining of Human Thymus lysate (35 µg protein in RIPA buffer). Detected by chemiluminescence.

Anti-TFEB Antibody (A83834)

Images continued:



Anti-TFEB Antibody (A83834) (0.5 μ g/ml) staining of HeLa (A) and (0.3 μ g/ml) Jurkat (B) cell lysate (35 μ g protein in RIPA buffer). Detected by chemiluminescence.