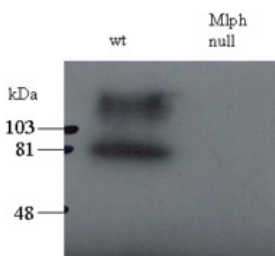


Anti-MLPH Antibody (A83841)

Specifications:

Name:	Anti-MLPH Antibody
Description:	Goat polyclonal antibody to MLPH.
Applications:	ELISA, WB, ICC, IF
Reactivity:	Mouse
Immunogen:	Synthetic peptide corresponding to Mouse Mlph (C terminal).
Sequence:	C-ARHIFAKPVMAQQP
Host:	Goat
Clonality:	Polyclonal
Isotype:	IgG
Conjugate:	Unconjugated
Purification:	Purified from goat serum by ammonium sulphate precipitation followed by antigen affinity chromatography using the immunizing peptide.
Concentration:	100 µg at 0.5 mg/ml.
Product Form:	Liquid
Formulation:	Supplied in Tris Buffered Saline, pH 7.30, with 0.02% Sodium Azide and 0.5% BSA.
Storage:	Shipped at 4°C. Upon delivery aliquot and store at -20°C. Avoid freeze / thaw cycles.
Disclaimer:	This product is for research use only. It is not intended for diagnostic or therapeutic use.

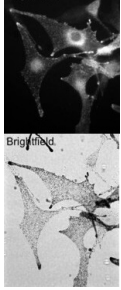
Images:



Anti-MLPH Antibody (A83841) staining (0.5µg/ml) of total melanocyte PNS (200ug per lane) of wild-type and leaden (Mlph null) mice. The upper band may represent the stacking-separating gel interface.

Anti-MLPH Antibody (A83841)

Images continued:



Wild-type C57bl6 derived melanocytes were stained with Anti-MLPH Antibody (A83841) (0.5 μ g/ml) and detected with Alexa568 conjugated donkey anti-sheep secondary antibodies. Brightfield image shows melanosome distribution.