

## Anti-KIF4A Antibody (A83849)

### Specifications:

Name:	Anti-KIF4A Antibody
Description:	Goat polyclonal antibody to KIF4A.
Applications:	ELISA, WB, IF, FC
Reactivity:	Human, Mouse
Immunogen:	Synthetic peptide corresponding to Human KIF4A (C terminal).
Sequence:	SFFSGCSPIEEEAH
Host:	Goat
Clonality:	Polyclonal
Isotype:	IgG
Conjugate:	Unconjugated
Purification:	Purified from goat serum by ammonium sulphate precipitation followed by antigen affinity chromatography using the immunizing peptide.
Concentration:	100 µg at 0.5 mg/ml.
Product Form:	Liquid
Formulation:	Supplied in Tris Buffered Saline, pH 7.30, with 0.02% Sodium Azide and 0.5% BSA.
Storage:	Shipped at 4°C. Upon delivery aliquot and store at -20°C. Avoid freeze / thaw cycles.
Disclaimer:	This product is for research use only. It is not intended for diagnostic or therapeutic use.

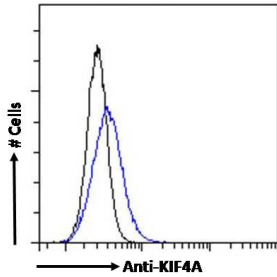
### Images:



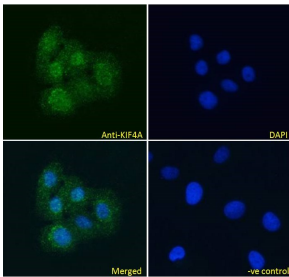
Anti-KIF4A Antibody (A83849) (2µg/ml) staining of nuclear NIH3T3 (A) and (2µg/ml) negative control Human Ovary (B) lysate. (35µg protein in RIPA buffer) Detected by chemiluminescence.

## Anti-KIF4A Antibody (A83849)

Images continued:



Anti-KIF4A Antibody (A83849) Flow cytometric analysis of paraformaldehyde fixed HEK293 cells (blue line), permeabilized with 0.5% Triton. Primary incubation 1hr (10 $\mu$ g/ml) followed by Alexa Fluor 488 secondary antibody (4 $\mu$ g/ml). IgG control: Unimmunized goat IgG (black line) followed by Alexa Fluor 488 secondary antibody.



Anti-KIF4A Antibody (A83849) Immunofluorescence analysis of paraformaldehyde fixed U2OS cells, permeabilized with 0.15% Triton. Primary incubation 1hr (10 $\mu$ g/ml) followed by Alexa Fluor 488 secondary antibody (4 $\mu$ g/ml), showing nuclear staining. The nuclear stain is DAPI (blue). Negative control: Unimmunized goat IgG (10 $\mu$ g/ml) followed by Alexa Fluor 488 secondary antibody (4 $\mu$ g/ml).