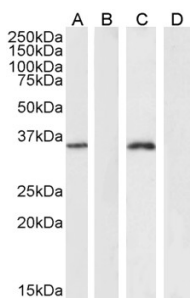


## Anti-FOXL2 Antibody (A83945)

### Specifications:

Name:	Anti-FOXL2 Antibody
Description:	Goat polyclonal antibody to FOXL2.
Applications:	ELISA, WB
Reactivity:	Human, Mouse
Immunogen:	Synthetic peptide corresponding to Human FOXL2 (C terminal).
Sequence:	C-DSKTGALHSRLDL
Host:	Goat
Clonality:	Polyclonal
Isotype:	IgG
Conjugate:	Unconjugated
Purification:	Purified from goat serum by ammonium sulphate precipitation followed by antigen affinity chromatography using the immunizing peptide.
Concentration:	100 µg at 0.5 mg/ml.
Product Form:	Liquid
Formulation:	Supplied in Tris Buffered Saline, pH 7.30, with 0.02% Sodium Azide and 0.5% BSA.
Storage:	Shipped at 4°C. Upon delivery aliquot and store at -20°C. Avoid freeze / thaw cycles.
Disclaimer:	This product is for research use only. It is not intended for diagnostic or therapeutic use.

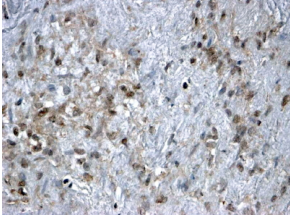
### Images:



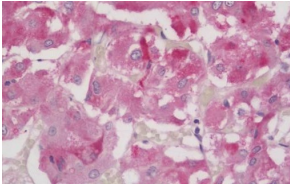
Anti-FOXL2 Antibody (A83945) (2µg/ml) staining of K562 cell lysate (A) + peptide (B) and HeLa cell lysate (C) + peptide (D) 35µg protein in RIPA buffer). Detected by chemiluminescence.

## Anti-FOXL2 Antibody (A83945)

Images continued:



Anti-FOXL2 Antibody (A83945) (2 $\mu$ g/ml) staining of paraffin embedded Human Ovary. Steamed antigen retrieval with citrate buffer pH 6, HRP-staining.



Anti-FOXL2 Antibody (A83945) (5 $\mu$ g/ml) staining of paraffin embedded Human Adrenal Gland. Steamed antigen retrieval with citrate buffer pH 6, AP-staining.