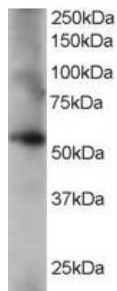


Anti-Coronin 3 Antibody (A84023)

Specifications:

| | |
|----------------|---|
| Name: | Anti-Coronin 3 Antibody |
| Description: | Goat polyclonal antibody to Coronin 3. |
| Applications: | ELISA, WB |
| Reactivity: | Human |
| Immunogen: | Synthetic peptide corresponding to Human CORO1C (C terminal). |
| Sequence: | C-RISKLEQQMAKIAA |
| Host: | Goat |
| Clonality: | Polyclonal |
| Isotype: | IgG |
| Conjugate: | Unconjugated |
| Purification: | Purified from goat serum by ammonium sulphate precipitation followed by antigen affinity chromatography using the immunizing peptide. |
| Concentration: | 100 µg at 0.5 mg/ml. |
| Product Form: | Liquid |
| Formulation: | Supplied in Tris Buffered Saline, pH 7.30, with 0.02% Sodium Azide and 0.5% BSA. |
| Storage: | Shipped at 4°C. Upon delivery aliquot and store at -20°C. Avoid freeze / thaw cycles. |
| Disclaimer: | This product is for research use only. It is not intended for diagnostic or therapeutic use. |

Images:



Anti-CORO1C Antibody (A84023) staining (0.2µg/ml) of human lung lysate (RIPA buffer, 35µg total protein per lane). Primary incubated for 1 hour. Detected by western blot using chemiluminescence.