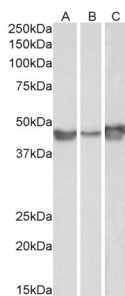


Anti-SERPINE1 Antibody (A84079)

Specifications:

Name:	Anti-SERPINE1 Antibody
Description:	Goat polyclonal antibody to SERPINE1.
Applications:	ELISA, WB, IHC, EIA
Reactivity:	Human
Immunogen:	Synthetic peptide corresponding to Human SERPINE1 (internal region).
Sequence:	C-GFKIDDKGMAPALRH
Host:	Goat
Clonality:	Polyclonal
Isotype:	IgG
Conjugate:	Unconjugated
Purification:	Purified from goat serum by ammonium sulphate precipitation followed by antigen affinity chromatography using the immunizing peptide.
Concentration:	100 µg at 0.5 mg/ml.
Product Form:	Liquid
Formulation:	Supplied in Tris Buffered Saline, pH 7.30, with 0.02% Sodium Azide and 0.5% BSA.
Storage:	Shipped at 4°C. Upon delivery aliquot and store at -20°C. Avoid freeze / thaw cycles.
Disclaimer:	This product is for research use only. It is not intended for diagnostic or therapeutic use.

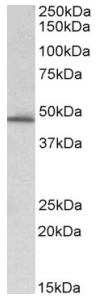
Images:



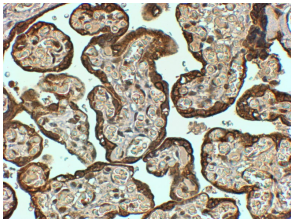
Anti-SERPINE1 Antibody (A84079) (0.1µg/ml) staining of A549 (A), HepG2 (B) and HeLa (C) lysates (35µg protein in RIPA buffer). Primary incubation was 1 hour. Detected by chemiluminescence.

Anti-SERPINE1 Antibody (A84079)

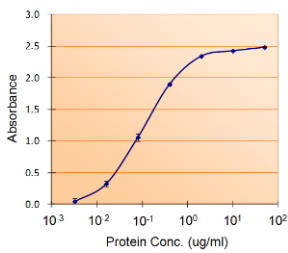
Images continued:



Anti-SERPINE1 Antibody (A84079) (0.3 μ g/ml) staining of Human Liver lysate (35 μ g protein in RIPA buffer). Primary incubation was 1 hour. Detected by chemiluminescence.



Anti-SERPINE1 Antibody (A84079) (4 μ g/ml) staining of paraffin embedded Human Placenta. Steamed antigen retrieval with Tris/EDTA buffer pH 9, HRP-staining.



Anti-SERPINE1 Antibody (A84079) (1.5 μ g/ml) as the reporter with the capture rabbit antibody (2.5 μ g/ml).