

Anti-CCKBR Antibody (A84091)

Specifications:

Name:	Anti-CCKBR Antibody
Description:	Goat polyclonal antibody to CCKBR.
Applications:	ELISA, WB, IHC
Reactivity:	Human, Mouse
Immunogen:	Synthetic peptide corresponding to Human CCKBR (internal region).
Sequence:	C-FDGSDSDSQSRVRNQ
Host:	Goat
Clonality:	Polyclonal
Isotype:	IgG
Conjugate:	Unconjugated
Purification:	Purified from goat serum by ammonium sulphate precipitation followed by antigen affinity chromatography using the immunizing peptide.
Concentration:	100 µg at 0.5 mg/ml.
Product Form:	Liquid
Formulation:	Supplied in Tris Buffered Saline, pH 7.30, with 0.02% Sodium Azide and 0.5% BSA.
Storage:	Shipped at 4°C. Upon delivery aliquot and store at -20°C. Avoid freeze / thaw cycles.
Disclaimer:	This product is for research use only. It is not intended for diagnostic or therapeutic use.

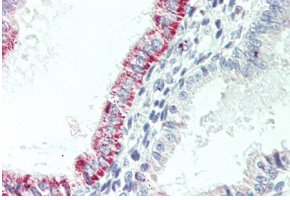
Images:



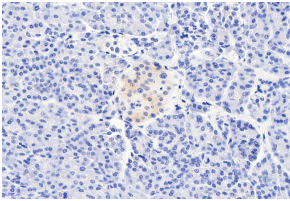
Anti-CCKBR Antibody (A84091) (1µg/ml) staining of Mouse Pancreas (A) and Rat Stomach (B) lysate (35µg protein in RIPA buffer). Detected by chemiluminescence.

Anti-CCKBR Antibody (A84091)

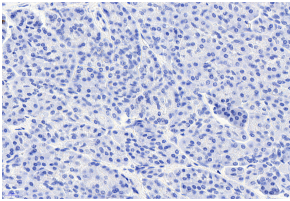
Images continued:



Anti-CCKBR Antibody (A84091) (5 μ g/ml) staining of paraffin embedded Human Uterus. Steamed antigen retrieval with citrate buffer pH 6, AP-staining.



Anti-CCKBR Antibody (A84091) (6 μ g/ml) staining of paraffin embedded Pancreas. Heat induced antigen retrieval with citrate buffer pH 6, HRP-staining.



Anti-CCKBR Antibody (A84091) Negative Control showing staining of paraffin embedded Human Pancreas, with no primary antibody.