

Anti-CHGA Antibody (A84217)

Specifications:

Name:	Anti-CHGA Antibody
Description:	Goat polyclonal antibody to CHGA .
Applications:	ELISA, WB, IHC, FC
Reactivity:	Human
Immunogen:	Synthetic peptide corresponding to Human CHGA (internal region).
Sequence:	C-QGAKERAHQKKH
Host:	Goat
Clonality:	Polyclonal
Isotype:	IgG
Conjugate:	Unconjugated
Purification:	Purified from goat serum by ammonium sulphate precipitation followed by antigen affinity chromatography using the immunizing peptide.
Concentration:	100 µg at 0.5 mg/ml.
Product Form:	Liquid
Formulation:	Supplied in Tris Buffered Saline, pH 7.30, with 0.02% Sodium Azide and 0.5% BSA.
Storage:	Shipped at 4°C. Upon delivery aliquot and store at -20°C. Avoid freeze / thaw cycles.
Disclaimer:	This product is for research use only. It is not intended for diagnostic or therapeutic use.

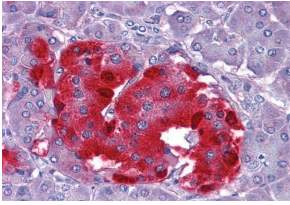
Images:



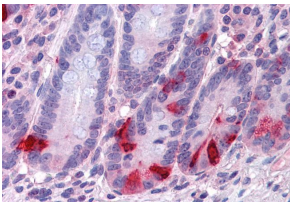
Anti-CHGA Antibody (A84217) (0.1 µg/ml) staining of isoform 1+ 2 Human Kidney lysate (35 µg protein in RIPA buffer). Detected by chemiluminescence.

Anti-CHGA Antibody (A84217)

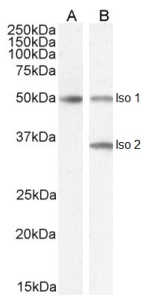
Images continued:



Anti-CHGA Antibody (A84217) (3.75µg/ml) staining of paraffin embedded Human Pancreas. Steamed antigen retrieval with citrate buffer pH 6, AP-staining.



Anti-CHGA Antibody (A84217) (3.75µg/ml) staining of paraffin embedded Human Small Intestine. Steamed antigen retrieval with citrate buffer pH 6, AP-staining.



Anti-CHGA Antibody (A84217) (2µg/ml) staining of isoform 1 Human Brain (A) and isoform 1+2 (B) lysate (35µg protein in RIPA buffer). Detected by chemiluminescence.