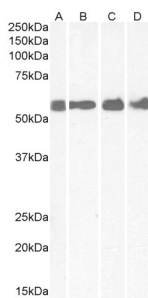


Anti-CRHR1 Antibody (A84396)

Specifications:

Name:	Anti-CRHR1 Antibody
Description:	Goat polyclonal antibody to CRHR1 .
Applications:	ELISA, WB
Reactivity:	Human, Mouse, Rat
Immunogen:	Synthetic peptide corresponding to Human CRHR1 (internal region).
Sequence:	C-NEEKKSKVHYH
Host:	Goat
Clonality:	Polyclonal
Isotype:	IgG
Conjugate:	Unconjugated
Purification:	Purified from goat serum by ammonium sulphate precipitation followed by antigen affinity chromatography using the immunizing peptide.
Concentration:	100 µg at 0.5 mg/ml.
Product Form:	Liquid
Formulation:	Supplied in Tris Buffered Saline, pH 7.30, with 0.02% Sodium Azide and 0.5% BSA.
Storage:	Shipped at 4°C. Upon delivery aliquot and store at -20°C. Avoid freeze / thaw cycles.
Disclaimer:	This product is for research use only. It is not intended for diagnostic or therapeutic use.

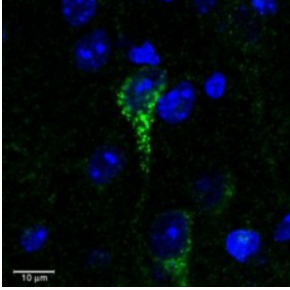
Images:



Anti-CRHR1 Antibody (A84396) (1µg/ml) staining of Human Colon (A), Cerebellum (B), Rat Brain (C) and Mouse spinal Cord (D) lysates (35µg protein in RIPA buffer). Detected by chemiluminescence.

Anti-CRHR1 Antibody (A84396)

Images continued:



Confocal image (3 μ m) of Anti-CRHR1 Antibody (A84396) (0.3 μ g/ml) staining in green a dendrite of a neuronal cell in C57 mouse cortex. Counter-stained with DAPI (in blue).