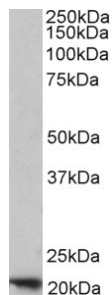


Anti-Ferritin Heavy Chain Antibody (A84621)

Specifications:

| | |
|----------------|---|
| Name: | Anti-Ferritin Heavy Chain Antibody |
| Description: | Goat polyclonal antibody to Ferritin Heavy Chain. |
| Applications: | ELISA, WB |
| Reactivity: | Human |
| Immunogen: | Synthetic peptide corresponding to Human FTH1 (C terminal). |
| Sequence: | C-DKHTLGSDNES |
| Host: | Goat |
| Clonality: | Polyclonal |
| Isotype: | IgG |
| Conjugate: | Unconjugated |
| Purification: | Purified from goat serum by ammonium sulphate precipitation followed by antigen affinity chromatography using the immunizing peptide. |
| Concentration: | 100 µg at 0.5 mg/ml. |
| Product Form: | Liquid |
| Formulation: | Supplied in Tris Buffered Saline, pH 7.30, with 0.02% Sodium Azide and 0.5% BSA. |
| Storage: | Shipped at 4°C. Upon delivery aliquot and store at -20°C. Avoid freeze / thaw cycles. |
| Disclaimer: | This product is for research use only. It is not intended for diagnostic or therapeutic use. |

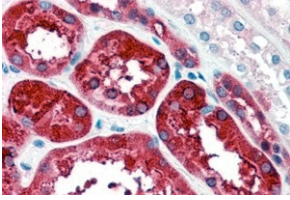
Images:



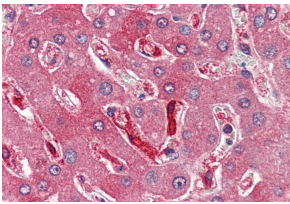
Anti-FTH1 Antibody (A84621) (1 µg/ml) staining of Human Placenta lysate (35 µg protein in RIPA buffer). Primary incubation was 1 hour. Detected by chemiluminescence.

Anti-Ferritin Heavy Chain Antibody (A84621)

Images continued:



Anti-FTH1 Antibody (A84621) (4 μ g/ml) staining of paraffin embedded Human Kidney. Steamed antigen retrieval with citrate buffer pH 6, AP-staining.



Anti-FTH1 Antibody (A84621) (4 μ g/ml) staining of paraffin embedded Human Liver. Steamed antigen retrieval with citrate buffer pH 6, AP-staining.