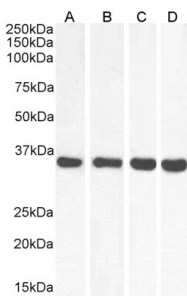


Anti-MDH2 Antibody (A85259)

Specifications:

Name:	Anti-MDH2 Antibody
Description:	Goat polyclonal antibody to MDH2.
Applications:	ELISA, WB
Reactivity:	Human, Mouse, Rat, Porcine
Immunogen:	Synthetic peptide corresponding to Human MDH2 (internal region).
Sequence:	C-TRDDLNTNAT
Host:	Goat
Clonality:	Polyclonal
Isotype:	IgG
Conjugate:	Unconjugated
Purification:	Purified from goat serum by ammonium sulphate precipitation followed by antigen affinity chromatography using the immunizing peptide.
Concentration:	100 µg at 0.5 mg/ml.
Product Form:	Liquid
Formulation:	Supplied in Tris Buffered Saline, pH 7.30, with 0.02% Sodium Azide and 0.5% BSA.
Storage:	Shipped at 4°C. Upon delivery aliquot and store at -20°C. Avoid freeze / thaw cycles.
Disclaimer:	This product is for research use only. It is not intended for diagnostic or therapeutic use.

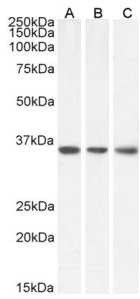
Images:



Anti-MDH2 Antibody (A85259) (0.01 µg/ml) staining of Human (A), Mouse (B), Rat (C) and Pig (D) Heart lysate (35 µg protein in RIPA buffer). Primary incubation was 1 hour. Detected by chemiluminescence.

Anti-MDH2 Antibody (A85259)

Images continued:



Anti-MDH2 Antibody (A85259) (0.1 μ g/ml) staining of HeLa (A), HepG2 (B) and NIH3T3 (C) lysate (35 μ g protein in RIPA buffer). Primary incubation was 1 hour. Detected by chemiluminescence.