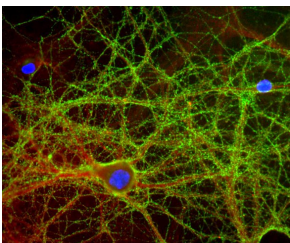


Anti-GAP43 Antibody (A85292)

Specifications:

Name:	Anti-GAP43 Antibody
Description:	Chicken polyclonal antibody to GAP43.
Specificity:	This antibody binds strongly to growth cones and axonal processes of neurons in cell culture and to synaptic regions in sectioned material.
Applications:	WB, ICC/IF, IHC
Recommended Dilutions:	WB: 1:1,000-1:5,000, ICC/IF: 1:500-1:1,000, IHC: 1:500-1:1,000
Reactivity:	Human, Horse, Cow, Porcine, Rat, Mouse
Immunogen:	C-terminal peptide of rodent GAP43, coupled to KLH.
Sequence:	KEDPEADQEHA
Host:	Chicken
Clonality:	Polyclonal
Isotype:	IgY
Conjugate:	Unconjugated
Molecular Weight:	~43 kDa (by SDS-PAGE)
Purity:	IgY preparation.
Product Form:	Liquid
Formulation:	Supplied as an aliquot of IgY preparation with 5mM Sodium Azide.
Disclaimer:	This product is for research use only. It is not intended for diagnostic or therapeutic use.

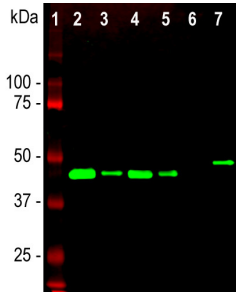
Images:



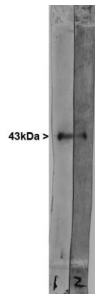
Mixed neuron-glia cultures stained with Anti-GAP43 Antibody (green) and Anti-rabbit antibody to alpha-II spectrin (A85352 | red), and DNA (blue). The Anti-GAP43 Antibody stains numerous axonal and dendritic profiles in these cultures, clearly revealing the submembrane cytoskeleton and vesicles.

Anti-GAP43 Antibody (A85292)

Images continued:



Western blot analysis of different tissue and cell lysates using Anti-GAP43 Antibody (1:5,000 | green): [1] protein standard (red), [2] rat brain, [3] rat spinal cord, [4] mouse brain, [5] mouse spinal cord, [6] C6 cells, [7] SH-SY5Y cells. Single band at the 43kDa mark corresponds to GAP43. The GAP43 protein only is detected in the lysates of neuronal origin. C6 cells are a rat glioma cell line and do not express GAP43.



Western blots of extract of cow hippocampus stained with Anti-GAP43 Antibody. A prominent band running at ~43 kDa represents GAP43.