

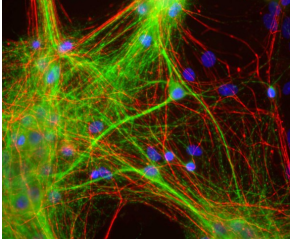
Anti-MAP2 Antibody [4H5] (A85297)

Specifications:

Name:	Anti-MAP2 Antibody [4H5]
Description:	Mouse monoclonal (4H5) antibody to MAP2.
Specificity:	The epitope for this antibody was mapped to amino acids 631-1,056 of the human sequence; since this antibody bound Recombinant Human MAP2 Projection P2 Protein (A270589).
Applications:	WB, ICC/IF, IHC
Recommended Dilutions:	WB: 1:10,000, ICC/IF: 1:1,000, IHC: 1:1,000
Reactivity:	Human, Rat, Mouse, Bovine
Immunogen:	Purified full-length bovine brain MAP2.
Host:	Mouse
Clonality:	Monoclonal
Clone ID:	4H5
Isotype:	IgG1
Conjugate:	Unconjugated
Purification:	Immunogen affinity purification.
Concentration:	1 mg/ml
Molecular Weight:	~280 kDa (by SDS-PAGE)
Product Form:	Liquid
Formulation:	Supplied in Phosphate Buffered Saline with 50% Glycerol and 5mM Sodium Azide.
Storage:	Shipped at 4°C. Upon delivery aliquot and store at -20°C. Avoid freeze / thaw cycles.
Disclaimer:	This product is for research use only. It is not intended for diagnostic or therapeutic use.

Anti-MAP2 Antibody [4H5] (A85297)

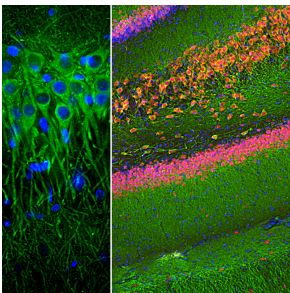
Images:



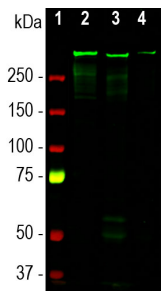
Mixed neuron and glia cultures stained with Anti-MAP2 Antibody (green) and Anti-NF-H Antibody (A85336 | red) and DNA (blue). Anti-MAP2 Antibody reveals strong cytoplasmic staining for dendrites and perikarya, which does not overlap with the Anti-NF-H Antibody which primarily binds to axons.



Western blot of rat brain extract probed with Anti-MAP2 Antibody. Note that the strong single band running at about 280 kDa corresponds to MAP2.



Immunofluorescent analysis of a rat hippocampus section stained with Anti-MAP2 Antibody [4H5] (A85297), at a dilution of 1:2,000, in green, and co-stained with Anti-Fox3 Antibody (A85403), at a dilution of 1:2,000 in red. Following transcardial perfusion of the rat with 4% paraformaldehyde, the brain was post-fixed for 24 hours, cut to 45 μ m, and free-floating sections were stained with the above antibodies. The Anti-MAP2 Antibody [4H5] (A85297) labels MAP2 protein in the perikarya and dendrites of most neurons while the Anti-Fox3 Antibody (A85403) antibody selectively stains nuclei and proximal soma of neuronal cells.



Western blot analysis of tissue and cell lysates using Anti-MAP2 Antibody [4H5] (A85297), at a dilution of 1:10,000, in green. The lanes contain samples of: [1] Protein standards, in red, [2] rat brain, [3] mouse brain, and [4] embryonic rat cortical neuron-glia cell lysate. A band at about 280 kDa corresponds to the MAP2A and MAP2B proteins.