

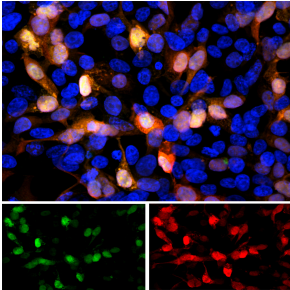
Anti-GFP Antibody (A85298)

Specifications:

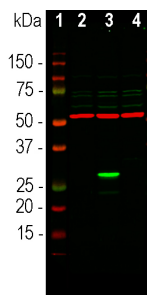
Name:	Anti-GFP Antibody
Description:	Rabbit polyclonal antibody to GFP.
Applications:	WB, ICC/IF
Recommended Dilutions:	WB: 1:1,000-1:5,000, ICC/IF: 1:2,000-1:5,000
Immunogen:	Recombinant Aequoria coerulea GFP protein, expressed in and purified from E. coli.
Sequence:	MVSKGAELFTGIVPILIELNGDVNGHKFSVSGEGEGDATYGKLTCLKFICTTGKLPVPPW PTLVTTLSYGVQCFSRYDPDHMKQHDFFKSAMPEGYIQERTIFFEDDGNYKSRAEVKFE GDTLVNRIELTGDFKEDGNILGNKMEYNYNAHNVYIMTDKAKNGIKVNFKIRHNIED GSVQLADHYQQNTPIGDGPVLLPDNHYLSTQSALS KDPNEKRDMYIFGFVTAAATH GMDELYK
Host:	Rabbit
Clonality:	Polyclonal
Isotype:	IgG
Conjugate:	Unconjugated
Purification:	Immunogen affinity purification.
Concentration:	1 mg/ml
Molecular Weight:	27 kDa
Product Form:	Liquid
Formulation:	Supplied in Phosphate Buffered Saline with 50% Glycerol and 5mM Sodium Azide.
Storage:	Shipped at 4°C. Upon delivery aliquot and store at -20°C. Avoid freeze / thaw cycles.
General Notes:	This antibody can be used to verify the expression, size, and stability of both AcGFP and eGFP fusion proteins in western blotting experiments, and to amplify GFP signals in tissues of transgenic animals.
Disclaimer:	This product is for research use only. It is not intended for diagnostic or therapeutic use.

Anti-GFP Antibody (A85298)

Images:



Immunofluorescent analysis of transfected HEK293 cells with a GFP construct, in green, and stained with Anti-GFP Antibody (A85298), dilution 1:2,000, in red. The blue is Hoechst staining of nuclear DNA. The Anti-GFP Antibody reveals GFP protein expressed only in transfected cells, and as a result these cells appear orange-yellow in color.



Western blot analysis of lysates of transfected HEK293 using Anti-GFP Antibody (A85298), in green, dilution 1:2,000. The lanes contain: [1] protein standard, [2] non-transfected control cells, [3] cells transfected with a GFP construct, and [4] cells transfected with mCherry construct. The strong band at ~27 kDa corresponds to GFP protein, detected only in cells transfected with GFP construct. The antibody does not recognize mCherry. The same blot was simultaneously probed with Anti-beta Tubulin Antibody (A85429), dilution 1:10,000, in red. The single band ~50 kDa represents beta-tubulin protein expressed in all preparations.