

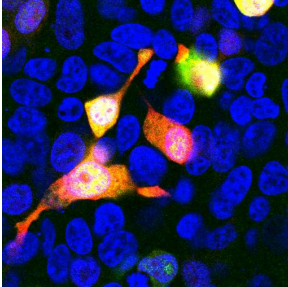
Anti-mCherry Antibody [1C51] (A85305)

Specifications:

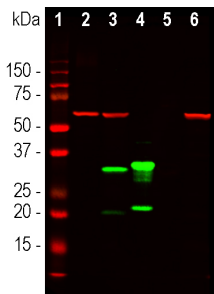
Name:	Anti-mCherry Antibody [1C51]
Description:	Mouse monoclonal (1C51) antibody to mCherry.
Applications:	WB, ICC/IF, IHC
Recommended Dilutions:	WB: 1:2,000, ICC/IF: 1:500, IHC: 1:500
Cross Reactivity:	This antibody does not recognize GFP.
Immunogen:	Recombinant full-length mCherry, expressed in and purified from E. coli.
Sequence:	MVSKGEEDNMAIIKEFMRFKVHMEGSVNGHEFEIEGEGEGRPYEGTQTAKLKVTKGGP LPFAWDILSPQFMYGSKAYVKHPADIPDYLKLSFPEGFKWERVMNFEDGGVVTVTQDS SLQDGEFIYKVKLRGTNFPDGPVMQKKTMGWEASSERMYPEDGALKGEIKQRLKLD GGHYDAEVKTTYKAKKPVQLPGAYNvNIKLDITSHNEDYTIVEQYERAEGRHSTGGMD ELYK
Host:	Mouse
Clonality:	Monoclonal
Clone ID:	1C51
Isotype:	IgG2a
Conjugate:	Unconjugated
Purification:	Immunogen affinity purification.
Concentration:	1 mg/ml
Molecular Weight:	~28 kDa
Product Form:	Liquid
Formulation:	Supplied in Phosphate Buffered Saline with 50% Glycerol and 5mM Sodium Azide.
Storage:	Shipped at 4°C. Upon delivery aliquot and store at -20°C. Avoid freeze / thaw cycles.
General Notes:	This antibody can be used to verify the size of fusion constructs by western blotting, and to amplify the endogenous fluorescence of mCherry in transfected cells.
Disclaimer:	This product is for research use only. It is not intended for diagnostic or therapeutic use.

Anti-mCherry Antibody [1C51] (A85305)

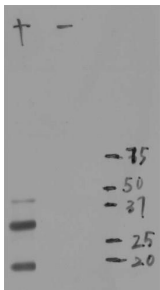
Images:



HEK293 cells transfected with mCherry and visualized in red. The cells were stained with Anti-mCherry in the green channel, and visualized using a confocal microscope. Transfected cells are yellow, showing overlap of the mCherry and the Anti-mCherry Antibody. Untransfected HEK293 cells do not express Cherry and do not stain with the antibody, but their nuclei can be visualized using a DNA stain (blue).



Western blot analysis of HEK293 cell lysates, and recombinant protein solutions using Anti-mCherry Antibody [1C51] (A85305), at a dilution of 1:1,000, in green. The lanes contain samples of: [1] Protein standards, [2] HEK293 cells, [3] HEK293 cells transfected with an mCherry-HA construct, [4] mCherry recombinant protein, [5] GFP recombinant protein, and [6] HEK293 cells transfected with a GFP construct. The major band at about 30 kDa corresponds to mCherry protein. The Anti-mCherry Antibody [1C51] (A85305) does not react with GFP protein. The same blot was simultaneously probed with Anti-Heat Shock Protein 60 Antibody (A85438), at a dilution of 1:5,000, in red, which shows a band at 60 kDa seen only in cell lysates as a positive loading control.



Blot of crude extract of HEK293 cells transfected with pFin-EF1-mCherry vector in lane labelled "+". The "-" lane is a blot of an equal amount of protein extract from untransfected HEK293 cells. Anti-mCherry Antibody binds a major band running at ~28 kDa corresponding to intact full-length mCherry. The two other bands are clearly processed forms of mCherry as they are not present in non-transfected HEK293 cells.