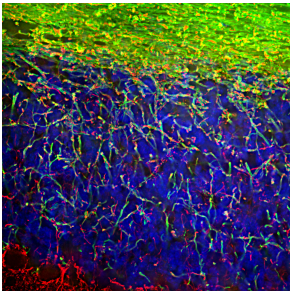


## Anti-Myelin Basic Protein Antibody (A85321)

### Specifications:

Name:	Anti-Myelin Basic Protein Antibody
Description:	Chicken polyclonal antibody to Myelin Basic Protein.
Specificity:	This antibody binds all four isoforms of Myelin Basic Protein. This antibody can be used to identify oligodendrocytes and Schwann cells in neural cell culture, to visualize myelin sheaths and myelinating cells in sections, and to probe western blots for MBP gene products. This antibody is also rather insensitive to aldehyde fixation and therefore can be used in immunohistochemistry of paraffin sections.
Applications:	WB, ICC/IF, IHC
Recommended Dilutions:	WB: 1:10,000, ICC/IF: 1:2,000, IHC: 1:5,000
Reactivity:	Human, Bovine, Porcine, Rat, Mouse
Immunogen:	Native Myelin Basic Protein isolated and purified from cow nerve.
Host:	Chicken
Clonality:	Polyclonal
Isotype:	IgY
Conjugate:	Unconjugated
Molecular Weight:	Rodent: 14 kDa, 17 kDa, 18.5 kDa, 21.5 kDa.
Purity:	IgY preparation.
Product Form:	Liquid
Formulation:	Supplied as an aliquot of IgY preparation with 5mM Sodium Azide.
Disclaimer:	This product is for research use only. It is not intended for diagnostic or therapeutic use.

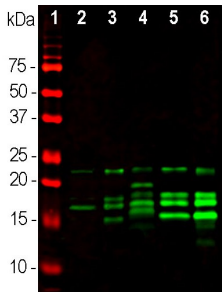
### Images:



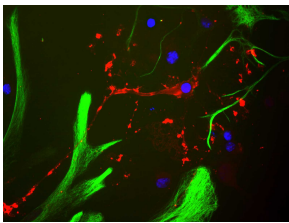
Immunofluorescent analysis of rat brain cerebellum section stained with Anti-MBP Antibody (1:5,000 | green) and co-stained with Anti-NF-L Antibody (A85451 | 1:5,000 | red). The Anti-MBP Antibody stains oligodendrocytes and myelin sheaths around axons. The Anti-NF-L Antibody labels dendrites and axons of neuronal cells.

## Anti-Myelin Basic Protein Antibody (A85321)

Images continued:



Western blot analysis of different tissue lysates using Anti-MBP Antibody (1:10,000 | green): [1] protein standard (red), [2] rat brain, [3] rat spinal cord, [4] rat sciatic nerve, [5] mouse brain, [6] mouse spinal cord. Multiple bands at between 14-21.5kDa correspond to various alternate transcripts of the single MBP gene.



Rat mixed neuron/glial cultures stained with Anti-MBP Antibody (red). Blue is a DNA stain. Note that the Anti-MBP Antibody stains an oligodendrocyte and some membrane shed from this cell. Other cells in the field include neurons, astrocytes, microglia and fibroblasts, all of which are completely negative for myelin basic protein. Astrocytes are stained with Anti-GFAP Antibody (A85422 | green) and that the staining is concentrated in the cell bodies.