

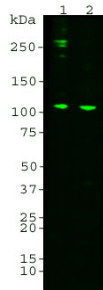
Anti-Complement C3 alpha chain Antibody [2B5] (A85332)

Specifications:

Name:	Anti-Complement C3 alpha chain Antibody [2B5]
Description:	Mouse monoclonal (2B5) antibody to Complement C3 alpha chain.
Applications:	WB, ELISA
Recommended Dilutions:	WB: 1:1,000-1:5,000
Reactivity:	Human
Immunogen:	Recombinant construct corresponding to the netrin domain of human C3.
Host:	Mouse
Clonality:	Monoclonal
Clone ID:	2B5
Isotype:	IgG1
Conjugate:	Unconjugated
Purification:	Immunogen affinity purification.
Concentration:	1 mg/ml
Molecular Weight:	185 kDa
Product Form:	Liquid
Formulation:	Supplied in Phosphate Buffered Saline with 50% Glycerol and 5mM Sodium Azide.
Storage:	Shipped at 4°C. Upon delivery aliquot and store at -20°C. Avoid freeze / thaw cycles.
Disclaimer:	This product is for research use only. It is not intended for diagnostic or therapeutic use.

Anti-Complement C3 alpha chain Antibody [2B5] (A85332)

Images:



Western blot analysis of Anti-a Subunit Of Complement Component 5 Antibody on human serum samples. 0.1 µg human C3 protein (Lane 1), 10 µg normal human serum proteins (Lane 2) was blotted with Anti-a Subunit Of Complement Component 5 Antibody (1:3,000). The Anti-a Subunit Of Complement Component 5 Antibody binds strongly and cleanly to a band at about 115 kDa which represents the intact a subunit of C3 and a weaker proteolytic band at approximately 45 kDa which is the C-terminal of the a subunit including the netrin domain. Bands at 190 kDa and above are likely the pro-C3 and its glycosylated form.