

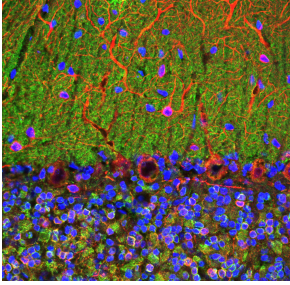
Anti-Visinin Like Protein 1 Antibody [3A9] (A85346)

Specifications:

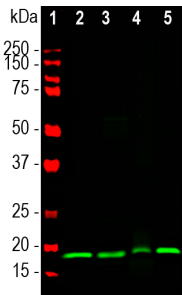
Name:	Anti-Visinin Like Protein 1 Antibody [3A9]
Description:	Mouse monoclonal (3A9) antibody to Visinin Like Protein 1.
Applications:	WB, ICC/IF, IHC
Recommended Dilutions:	WB: 1:1,000-1:2,000, ICC/IF: 1:500-1:1,000, IHC: 1:500-1:1,000
Reactivity:	Human, Rat, Mouse, Bovine, Porcine
Immunogen:	Recombinant full-length human Visinin-like Protein 1, expressed in and purified from E. coli.
Host:	Mouse
Clonality:	Monoclonal
Clone ID:	3A9
Isotype:	IgG1
Conjugate:	Unconjugated
Purification:	Immunogen affinity purification.
Concentration:	1 mg/ml
Molecular Weight:	18 kDa
Product Form:	Liquid
Formulation:	Supplied in Phosphate Buffered Saline with 50% Glycerol and 5mM Sodium Azide.
Storage:	Shipped at 4°C. Upon delivery aliquot and store at -20°C. Avoid freeze / thaw cycles.
Disclaimer:	This product is for research use only. It is not intended for diagnostic or therapeutic use.

Anti-Visinin Like Protein 1 Antibody [3A9] (A85346)

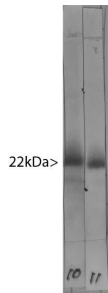
Images:



Confocal image of adult rat cerebellum stained with Anti-Visinin Like Protein 1 Antibody (green), Anti-MAP2 Antibody (A85363 | red) and DNA (blue). The Anti-Visinin Like Protein 1 Antibody reveals perikarya and synaptic regions in the neuron rich granular layer (bottom) and synapse rich molecular layer (top). Note that the large prominent Purkinje neurons at the junction of these two layers do not stain with this antibody.



Western blot analysis of different tissue lysates using Anti-Visinin Like Protein 1 Antibody [3A9] (A85346), at a dilution of 1:1,000, in green. The lanes contain samples of: [1] Protein standards, in red, [2] rat brain, [3] mouse brain, [4] pig hippocampus, and [5] cow cerebellum. The band at about 20 kDa corresponds to the VLP1 protein.



Western blot of bovine cerebellum homogenate stained with Anti-Visinin Like Protein 1 Antibody in Lane 11. Note the strong clean band running at 22 kDa. Lane 10 shows the same material stained with Anti-Visinin Like Protein 1 Antibody (A85345) which binds to the same band.