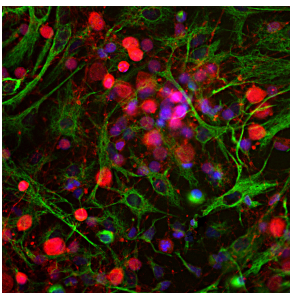


## Anti-UCHL1 Antibody (A85349)

### Specifications:

Name:	Anti-UCHL1 Antibody
Description:	Chicken polyclonal antibody to UCHL1.
Applications:	WB, ICC/IF, IHC
Recommended Dilutions:	WB: 1:2,000-1:5,000, ICC/IF: 1:500-1:1,000, IHC: 1:500-1:1,000
Reactivity:	Human, Rat, Mouse, Bovine, Porcine, Horse
Immunogen:	Recombinant full-length human UCHL1, expressed in and purified from E. coli.
Host:	Chicken
Clonality:	Polyclonal
Isotype:	IgY
Conjugate:	Unconjugated
Molecular Weight:	24 kDa
Purity:	IgY preparation.
Product Form:	Liquid
Formulation:	Supplied as an aliquot of IgY preparation with 5mM Sodium Azide.
Disclaimer:	This product is for research use only. It is not intended for diagnostic or therapeutic use.

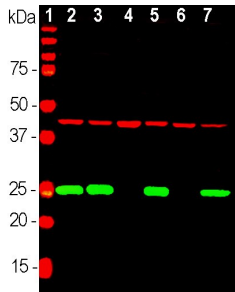
### Images:



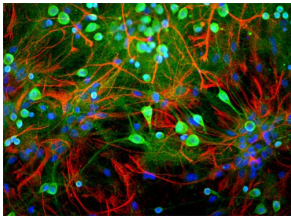
Immunofluorescent analysis of cortical neuron-glia cell culture from E20 rat stained with Anti-UCHL1 Antibody (1:500 | red) and Anti-Vimentin Antibody (A85423 | 1:2,000 | green). The blue is DAPI staining of nuclear DNA. The Anti-UCHL1 Antibody produces strong staining of the cell body and dendrites in neurons. The Anti-Vimentin Antibody stains intermediate filaments in fibroblastic and developing glial cells.

## Anti-UCHL1 Antibody (A85349)

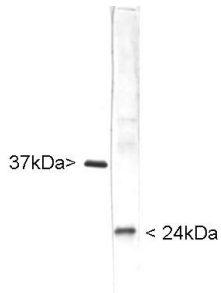
Images continued:



Western blot analysis of equal amounts of different tissue and cell lysates using Anti-UCHL1 Antibody (1:2,000 | green) and Anti-Actin Antibody (A85388 | 1:1,000 | red): [1] protein standard, [2] rat brain, [3] mouse brain, [4] NIH-3T3, [5] HEK293, [6] HeLa and [7] SH-SY5Y cells. The single band at 24 kDa mark corresponds to UCHL1 protein which is detectable in CNS extracts and lysates of cells with neuronal properties but not in lysates of HeLa, NIH-3T3 and other non-neuronal cells. Actin is detected with apparent molecular weight of 42 kDa and provides an excellent loading control.



Rat mixed neuron/glia cultures stained with Anti-UCHL1 Antibody (green) and Anti-GFAP Antibody (A85419 | red). Blue is a DNA stain. Note that the Anti-UCHL1 Antibody stains neurons strongly and specifically, and that the staining is concentrated in the cell bodies, though some does extend into the dendrites also.



Blots of whole cell homogenate of the human SH-SY5Y neuroblastoma cell line stained with Anti-GAPDH Antibody (A85379 | Left Lane) and Anti-UCHL1 Antibody (Right Lane). The Anti-GAPDH Antibody stains a ~37kDa band while the Anti-UCHL1 Antibody stains a band at about 24kDa.