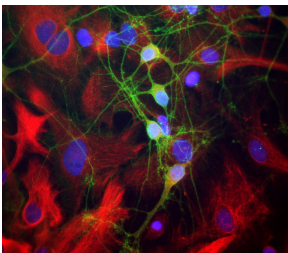


## Anti-alpha II Spectrin Antibody (A85352)

### Specifications:

Name:	Anti-alpha II Spectrin Antibody
Description:	Rabbit polyclonal antibody to alpha II Spectrin.
Applications:	WB, ICC/IF, IHC
Recommended Dilutions:	WB: 1:2,000-1:5,000, ICC/IF: 1:500-1:1,000, IHC: 1:500-1:1,000
Reactivity:	Human, Rat, Mouse, Bovine
Immunogen:	Recombinant constructs derived from the C-terminus of human alpha II Spectrin, comprising the C-terminal 14 spectrin repeats, specifically amino acids 676-2,447.
Host:	Rabbit
Clonality:	Polyclonal
Isotype:	IgG
Conjugate:	Unconjugated
Molecular Weight:	~240 kDa
Purity:	Whole antiserum.
Product Form:	Liquid
Formulation:	Supplied as an aliquot of serum with 5mM Sodium Azide.
Storage:	Shipped at 4°C. Upon delivery aliquot and store at -20°C. Avoid freeze / thaw cycles.
Disclaimer:	This product is for research use only. It is not intended for diagnostic or therapeutic use.

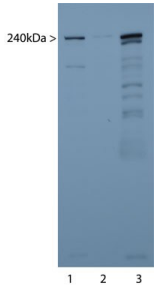
### Images:



Mixed neuron-glia cultures stained with Anti-a-II Spectrin Antibody (green) and Anti-Nestin Antibody (A85293 | red). The Anti-a-II Spectrin Antibody stains numerous axonal and dendritic profiles in these cultures, clearly revealing the submembraneous cytoskeleton. Since alpha-II spectrin is specific for neurons in the CNS, the glial cells in this culture are not recognized by this antibody.

## Anti-alpha II Spectrin Antibody (A85352)

Images continued:



Western blots of mouse sciatic nerve extract (Lanes 1 and 2) and brain homogenate (Lane 3). A prominent band running at 240kDa represents the intact alpha-II spectrin heavy chain. More minor bands below this likely represent in vivo proteolytic fragments of alpha-II spectrin.