

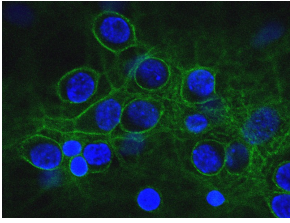
Anti-alpha II Spectrin Antibody [3D7] (A85353)

Specifications:

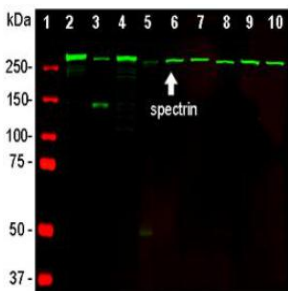
Name:	Anti-alpha II Spectrin Antibody [3D7]
Description:	Mouse monoclonal (3D7) antibody to alpha II Spectrin.
Applications:	WB, ICC/IF, IHC
Recommended Dilutions:	WB: 1:3,000, ICC/IF: 1:500, IHC: 1:500
Reactivity:	Human, Rat, Mouse
Immunogen:	Recombinant construct derived from the C-terminus of alpha II Spectrin, comprising the C-terminal 2 spectrin repeats, specifically amino acids 2,086-2,447 from AAB41498.1, expressed in and purified from E. coli.
Host:	Mouse
Clonality:	Monoclonal
Clone ID:	3D7
Isotype:	IgG1
Conjugate:	Unconjugated
Purification:	Immunogen affinity purification.
Concentration:	1 mg/ml
Molecular Weight:	~240 kDa
Product Form:	Liquid
Formulation:	Supplied in Phosphate Buffered Saline with 50% Glycerol and 5mM Sodium Azide.
Storage:	Shipped at 4°C. Upon delivery aliquot and store at -20°C. Avoid freeze / thaw cycles.
Disclaimer:	This product is for research use only. It is not intended for diagnostic or therapeutic use.

Anti-alpha II Spectrin Antibody [3D7] (A85353)

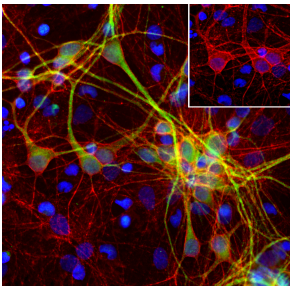
Images:



Confocal image of mixed neuron-glia cultures stained with Anti-a-II Spectrin Antibody (green) and counterstained for DNA (blue). The Anti-a-II Spectrin Antibody stains numerous axonal and dendritic profiles in these cultures, and this image shows an optical section through a group of neuronal cell bodies. Anti-a-II Spectrin Antibody clearly reveals the submembranous cytoskeleton. Since a-II spectrin is specific for neurons in the CNS, the glial cells in this culture are not recognized by this antibody. This antibody also reveals the submembranous cytoskeleton of the axon.



Western blot analysis of neural tissue and cell lysates using Anti-a-II Spectrin Antibody (green): [1] protein standard, [2] rat whole brain, [3] rat spinal cord, [4] mouse whole brain, [5] mouse spinal cord, [6] NIH-3T3, [7] HEK293, [8] HeLa, [9] SH-SY5Y, [10] C6 cells. A prominent band at about 250-260 kDa represents the intact a-II spectrin heavy chain in neural tissues or cell lines, but not in HeLa.



Immunofluorescent analysis of cortical neuron-glia cell culture from E20 rat embryos stained with Anti-alpha II Spectrin Antibody [3D7] (A85353), at a dilution of 1:500, in red, and co-stained with Anti-MAP2 Antibody (A85363), at a dilution of 1:10,000 in green. The nuclear DNA is visualised in blue using Hoechst staining. The spectrin antibody stains membranes of neuronal cell bodies, axons, and their dendrites, while the Anti-MAP2 Antibody (A85363) labels dendrites and perikarya of mature neurons only.



Western blots of bovine spinal cord extract probed with Anti-a-II Spectrin Antibody. A prominent band running at 240 kDa represents the intact a-II spectrin heavy chain. More minor bands below this likely represent in vivo proteolytic fragments of a-II spectrin.