

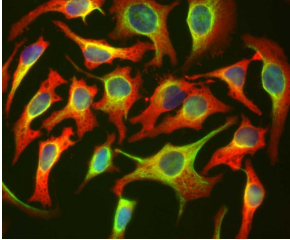
Anti-HSP27 Antibody [6H11] (A85358)

Specifications:

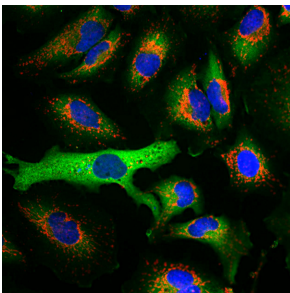
Name:	Anti-HSP27 Antibody [6H11]
Description:	Mouse monoclonal (6H11) antibody to HSP27.
Applications:	WB, ICC/IF, IHC
Recommended Dilutions:	WB: 1:10,000, ICC/IF: 1,000, IHC: 1:1,000
Reactivity:	Human
Cross Reactivity:	This antibody does not cross-react with rodent.
Immunogen:	Recombinant full-length human HSP27, expressed in and purified from E. coli.
Host:	Mouse
Clonality:	Monoclonal
Clone ID:	6H11
Isotype:	IgG1
Conjugate:	Unconjugated
Purification:	Immunogen affinity purification.
Concentration:	1 mg/ml
Molecular Weight:	27 kDa
Product Form:	Liquid
Formulation:	Supplied in Phosphate Buffered Saline with 50% Glycerol and 5mM Sodium Azide.
Storage:	Shipped at 4°C. Upon delivery aliquot and store at -20°C. Avoid freeze / thaw cycles.
Disclaimer:	This product is for research use only. It is not intended for diagnostic or therapeutic use.

Anti-HSP27 Antibody [6H11] (A85358)

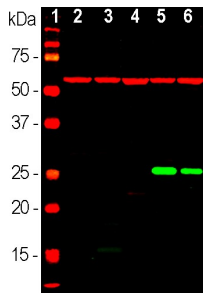
Images:



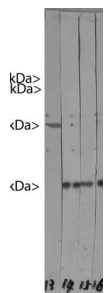
HeLa cells staining with Anti-Heat Shock Protein 27 Antibody (red), Anti-Vimentin Antibody (A85421 | green) and DNA (blue). The Anti-Heat Shock Protein 27 Antibody reveals strong cytoplasmic staining and penetrates into the actin rich ruffled margins, while the Anti-Vimentin Antibody reveals cytoplasmic intermediate filaments.



Immunofluorescent analysis of HeLa cells stained with Anti-Heat Shock Protein 27 Antibody (1:2,000 | green) and Anti-Heat Shock Protein 60 Antibody (A85438 | 1:2,000 | red). Blue is DAPI staining of nuclear DNA. The Anti-Heat Shock Protein 27 Antibody produces strong cytoplasm staining, while the Anti-Heat Shock Protein 60 Antibody specifically labels mitochondria.



Western blot analysis of tissue or whole cell lysates using Anti-Heat Shock Protein 27 Antibody (1:10,000 | green): [1] protein standard (red), [2] rat brain, [3] mouse brain, [4] NIH/3T3, [5] HEK293, [6] HeLa, [7] SH-SY5Y cells. Strong single band at ~27 kDa mark corresponds to HSP27 protein, detected only in human cell lines. The blot was simultaneously probed with Anti-Heat Shock Protein 60 Antibody (A85437 | 1:5,000 | red). A strong 60 kDa band is present in all preparations.



Western blots of HeLa cell crude extracts. Lane 16 was probed with Anti-Heat Shock Protein 27 Antibody, while Lanes 14 and 15 were probed with two other Anti-Heat Shock Protein 27 Antibodies that were generated at the same time (not on the sale). Note the strong clean bands at 27 kDa. Lane 17 was probed with Anti-Lamin A/C Antibody (A85444) which binds two bands running at 74 kDa and 65 kDa. Lane 13 was probed with Anti-Actin Antibody (A85388). Molecular weights of each protein are as indicated, and dots indicate the presence of major HeLa proteins.