

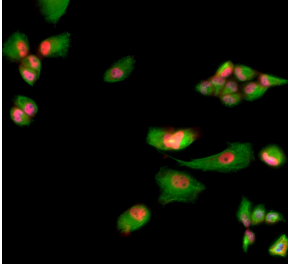
Anti-MBNL1 Antibody [1H1] (A85383)

Specifications:

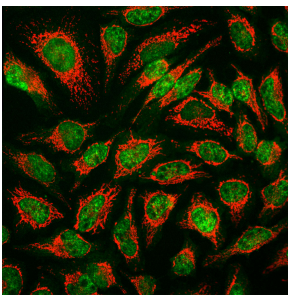
Name:	Anti-MBNL1 Antibody [1H1]
Description:	Mouse monoclonal (1H1) antibody to MBNL1.
Applications:	WB, ICC/IF, IHC
Recommended Dilutions:	WB: 1:1,000-1:2,000, ICC/IF: 1:1,000, IHC: 1:1,000
Reactivity:	Human
Cross Reactivity:	This antibody does not cross-react with Mouse or Rat.
Immunogen:	Recombinant full-length human muscleblind-like 1 protein, expressed in and purified from E. coli.
Host:	Mouse
Clonality:	Monoclonal
Clone ID:	1H1
Isotype:	IgG1
Conjugate:	Unconjugated
Purification:	Immunogen affinity purification.
Concentration:	1 mg/ml
Molecular Weight:	39 kDa
Product Form:	Liquid
Formulation:	Supplied in Phosphate Buffered Saline with 50% Glycerol and 5mM Sodium Azide.
Storage:	Shipped at 4°C. Upon delivery aliquot and store at -20°C. Avoid freeze / thaw cycles.
General Notes:	This antibody is a useful nuclear matrix marker in immunofluorescence and can be used to monitor the nuclear fraction in biochemical experiments.
Disclaimer:	This product is for research use only. It is not intended for diagnostic or therapeutic use.

Anti-MBNL1 Antibody [1H1] (A85383)

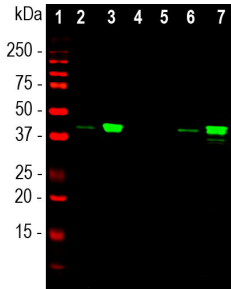
Images:



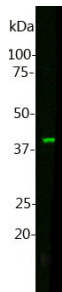
HeLa cells were stained with Anti-Muscleblind Like Protein 1 Antibody (1: 1,000). Muscleblind-like protein 1 is present in the nucleus of HeLa cells (red). Co-staining with Anti-Vimentin Antibody (A85420 | red) reveals cytoplasmic intermediate filaments. Blue is a DNA stain which largely colocalizes with the MBNL1 protein in the nucleus.



Immunofluorescent analysis of HeLa cells stained with Anti-Muscleblind Like Protein 1 Antibody [1H1] (A85383), at a dilution of 1:1,000 in green, and Anti-Heat Shock Protein 60 Antibody (A85438), at a dilution of 1:5,000, in red. The Anti-Muscleblind Like Protein 1 Antibody [1H1] (A85383) specifically labels nuclei, while the Anti-Heat Shock Protein 60 Antibody (A85438) reveals proteins expressed in mitochondria.



Western blot analysis of cytosol or nuclear enriched fractions of whole cell lysates, using Anti-Muscleblind Like Protein 1 Antibody [1H1] (A85383), at a dilution of 1:1,000, in green. The lanes contain samples of: [1] Protein standards, in red, [2] HEK293 cells cytosol, [3] HEK293 cells nuclear fraction, [4] NIH-3T3 cells cytosol, [5] NIH-3T3 cells nuclear fraction, [6] HeLa cells cytosol, and [7] HeLa cells nuclear fraction. The strong band at 40 kDa corresponds to Muscleblind Like Protein 1, which is predominantly detected in the nuclear enriched fractions. Anti-Muscleblind Like Protein 1 Antibody [1H1] (A85383) binds exclusively to the human protein, and does not bind the rodent homologue.



Western blot analysis of Anti-Muscleblind Like Protein 1 Antibody. Blot of HL60 cell lysate was probed with Anti-Muscleblind Like Protein 1 Antibody (1:1,000). The antibody binds Muscleblind-like protein 1 at ~40kDa, as expected.