

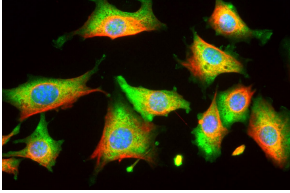
## Anti-Enolase 1 Antibody [253] (A85406)

### Specifications:

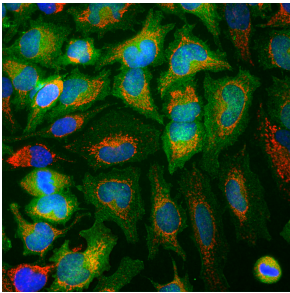
Name:	Anti-Enolase 1 Antibody [253]
Description:	Mouse monoclonal (253) antibody to Enolase 1.
Specificity:	This antibody is specific for Enolase 1 and does not cross-react with Enolase 2 or Enolase 3.
Applications:	WB, ICC/IF, IHC
Recommended Dilutions:	WB: 1:5,000-1:10,000, ICC/IF: 1:2,000-1:5,000, IHC: 1:2,000-1:5,000
Reactivity:	Human, Rat, Mouse, Bovine, Porcine, Horse
Immunogen:	N-terminal 12 amino acids of bovine Enolase 1; the sequence MSILKLVAREIF formed into an 8 armed MAP construct. This produces a dendrimer presenting 8 peptides to the immune system obviating the need for coupling to KLH or other carrier protein.
Host:	Mouse
Clonality:	Monoclonal
Clone ID:	253
Isotype:	IgG1
Conjugate:	Unconjugated
Purification:	Immunogen affinity purification.
Concentration:	1 mg/ml
Molecular Weight:	47 kDa
Product Form:	Liquid
Formulation:	Supplied in Phosphate Buffered Saline with 50% Glycerol and 5mM Sodium Azide.
Storage:	Shipped at 4°C. Upon delivery aliquot and store at -20°C. Avoid freeze / thaw cycles.
Disclaimer:	This product is for research use only. It is not intended for diagnostic or therapeutic use.

## Anti-Enolase 1 Antibody [253] (A85406)

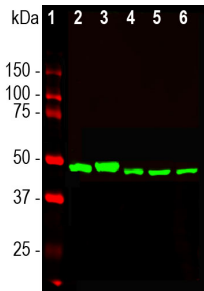
### Images:



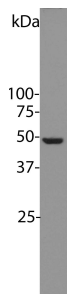
NIH/3T3 cells stained with Anti-Enolase 1 Antibody (green), Anti-Vimentin Antibody (A85421 | red) and DNA (blue). The Anti-Enolase 1 Antibody reveals strong cytoplasmic staining, while the Anti-Vimentin Antibody reveals cytoplasmic intermediate filaments.



Immunofluorescent analysis of HeLa cells stained with Anti-Enolase 1 Antibody [253] (A85406), at a dilution of 1:500, in green, and co-stained with Anti-Heat Shock Protein 60 Antibody (A85438), at a dilution of 1:5,000, in red. The blue is DAPI staining of nuclear DNA. The Anti-Enolase 1 Antibody [253] (A85406) reveals strong cytoplasmic staining while the Anti-Heat Shock Protein 60 Antibody (A85438) specifically labels mitochondria in these cells.



Western blot analysis of different cell lysates using Anti-Enolase 1 Antibody [253] (A85406), at a dilution of 1:10,000, in green. The lanes contain samples of: [1] Protein standards, in red, [2] NIH-3T3 I cells, [3] C6 cells, [4] HEK293 cells, [5] HeLa cells, and [6] SH-SY5Y cells. A strong single band at 47 kDa corresponds to the Enolase 1 protein.



Blot of HeLa cell lysates probed with Anti-Enolase 1 Antibody. The antibody stains a single sharp band corresponding to enolase-1/a-enolase/NNE at about 47 kDa.