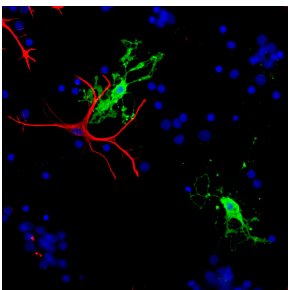


Anti-CNPase Antibody (A85412)

Specifications:

Name:	Anti-CNPase Antibody
Description:	Rabbit polyclonal antibody to CNPase.
Applications:	WB, ICC/IF, IHC
Recommended Dilutions:	WB: 1:1,000-1:5,000, ICC/IF: 1:1,000-1:2,000
Reactivity:	Human, Rat, Mouse
Immunogen:	Recombinant full-length human CNP protein, expressed in and purified from E. coli.
Host:	Rabbit
Clonality:	Polyclonal
Isotype:	IgG
Conjugate:	Unconjugated
Molecular Weight:	46 kDa, 48 kDa
Purity:	Whole antiserum.
Product Form:	Liquid
Formulation:	Supplied as an aliquot of serum with 5mM Sodium Azide.
Storage:	Shipped at 4°C. Upon delivery aliquot and store at -20°C. Avoid freeze / thaw cycles.
General Notes:	This antibody can be used to identify myelinating cells in cell culture and in sections, and to trace axonal projections in sectioned material.
Disclaimer:	This product is for research use only. It is not intended for diagnostic or therapeutic use.

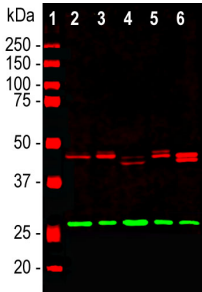
Images:



Immunofluorescent analysis of cortical neuron-glia cell culture from E20 rat stained with Anti-CNPase Antibody (A85412), dilution 1:1,000, in green, and co-stained with Anti-GFAP Antibody [5C10] (A85422), dilution 1:1,000, in red. The blue is DAPI staining of nuclear DNA. The CNP antibody stains the myelin producing cells, oligodendrocytes in this part of the CNS, while the GFAP antibody stains astroglia.

Anti-CNPase Antibody (A85412)

Images continued:



Western blot analysis of different tissue lysates using Anti-CNPase Antibody (A85412), dilution 1:5,000, in red. The lanes contain: [1] protein standard (red), [2] rat brain, [3] rat spinal cord, [4] mouse brain, [5] mouse spinal cord, and [6] cow spinal cord. Double bands at 46 and 48 kDa mark correspond to the two isoforms of the CNP protein. The blot was simultaneously probed with Anti-Calretinin Antibody (A85366), dilution 1:2,000, in green. The single band at 29 kDa corresponds to the calretinin protein.