

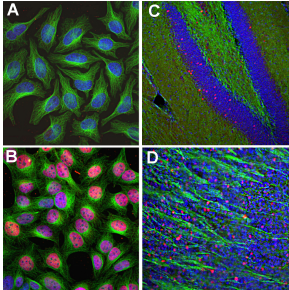
## Anti-c-Fos Antibody (A85425)

### Specifications:

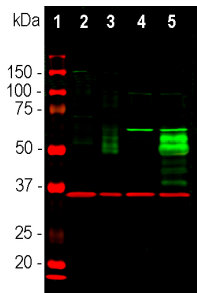
Name:	Anti-c-Fos Antibody
Description:	Rabbit polyclonal antibody to c-Fos.
Applications:	WB, ICC/IF, IHC
Recommended Dilutions:	WB: 1:2,000, ICC/IF: 1:2,000, IHC: 1:5,000-1:10,000
Reactivity:	Human, Rat, Mouse
Immunogen:	Recombinant full-length human c-FOS, expressed in and purified from E. coli.
Host:	Rabbit
Clonality:	Polyclonal
Isotype:	IgG
Conjugate:	Unconjugated
Purification:	Immunogen affinity purification.
Concentration:	1 mg/ml
Molecular Weight:	50-65 kDa (by SDS-PAGE)
Product Form:	Liquid
Formulation:	Supplied in Phosphate Buffered Saline with 50% Glycerol and 5mM Sodium Azide.
Storage:	Shipped at 4°C. Upon delivery aliquot and store at -20°C. Avoid freeze / thaw cycles.
Disclaimer:	This product is for research use only. It is not intended for diagnostic or therapeutic use.

## Anti-c-Fos Antibody (A85425)

### Images:



[Left] Immunofluorescent analysis of HeLa cells stained with Anti-c-Fos Antibody (A85425), dilution 1:2,000, in red, and Anti-beta Tubulin Antibody (A85428), dilution 1:10,000, in green. The blue is DAPI staining of nuclear DNA. HeLa cells were kept in fetal bovine serum (FBS)-free media for 36 hours. Then the cells were [A] treated with PBS, as a control, or [B] stimulated with 20% FBS for 30 min. Anti-c-FOS antibody labels only the nuclei of stimulated cells. [Right] [C] Mouse hippocampus or [D] olfactory bulb sections stained with Anti-c-Fos Antibody (A85425), dilution 1:10,000, in red, and Anti-NF-L Antibody (A85453), dilution 1:5,000, in green. The blue is Hoechst staining of nuclear DNA. Following transcardial perfusion of mouse with 4% paraformaldehyde, the brain was post-fixed for 24 hours, cut to 45  $\mu$ m, and free-floating sections were stained with the above antibodies. The c-FOS antibody stains only nuclei of spontaneously active neurons. NF-L is expressed in axons of neuronal cells.



Western blot analysis of cell lysates using Anti-c-Fos Antibody (A85425), dilution 1:2,000, in green, and Anti-GAPDH Antibody [1D4] (A85382), dilution 1:5,000, in red, used as a loading control. The lanes contain: [1] protein standard (red), [2] HeLa cells grown in FBS free media, [3] HeLa cells stimulated with 20% FBS for 2 hours after being in FBS free media for 36 hours, [4] rat cortical neurons, and [5] rat cortical neurons treated with membrane depolarization buffer for 5 hours. Multiple bands at 50-65 kDa in stimulated or treated cell lysates correspond to different isoforms of the c-FOS protein.